



XCubeSAN Series Application Note

VSS Application with QVSS Client and Symantec Backup Exec 2014



QSAN Technology, Inc.
www.QSAN.com



Copyright

© Copyright 2019 QSAN Technology, Inc. All rights reserved. No part of this document may be reproduced or transmitted without written permission from QSAN Technology, Inc.

October 2019

This edition applies to QSAN XCubeSAN series. QSAN believes the information in this publication is accurate as of its publication date. The information is subject to change without notice.

Trademarks

QSAN, the QSAN logo, XCubeSAN, and QSAN.com are trademarks or registered trademarks of QSAN Technology, Inc.

Other trademarks and trade names used in this document to refer to either the entities claiming the marks and names or their products are the property of their respective owners.

Notices

This XCubeSAN series white paper is applicable to the following XCubeSAN models:

XCubeSAN Storage System 4U 19" Rack Mount Models

Model Name	Controller Type	Form Factor, Bay Count, and Rack Unit
XS5224D	Dual Controller	LFF 24-disk 4U Chassis
XS3224D	Dual Controller	LFF 24-disk 4U Chassis
XS3224S	Single Controller	LFF 24-disk 4U Chassis
XS1224D	Dual Controller	LFF 24-disk 4U Chassis
XS1224S	Single Controller	LFF 24-disk 4U Chassis

XCubeSAN Storage System 3U 19" Rack Mount Models

Model Name	Controller Type	Form Factor, Bay Count, and Rack Unit
XS5216D	Dual Controller	LFF 16-disk 3U Chassis
XS3216D	Dual Controller	LFF 16-disk 3U Chassis
XS3216S	Single Controller	LFF 16-disk 3U Chassis
XS1216D	Dual Controller	LFF 16-disk 3U Chassis
XS1216S	Single Controller	LFF 16-disk 3U Chassis

XCubeSAN Storage System 2U 19" Rack Mount Models

Model Name	Controller Type	Form Factor, Bay Count, and Rack Unit
XS5212D	Dual Controller	LFF 12-disk 2U Chassis
XS5212S	Single Controller	LFF 12-disk 2U Chassis
XS3212D	Dual Controller	LFF 12-disk 2U Chassis
XS3212S	Single Controller	LFF 12-disk 2U Chassis
XS1212D	Dual Controller	LFF 12-disk 2U Chassis
XS1212S	Single Controller	LFF 12-disk 2U Chassis
XS5226D	Dual Controller	SFF 26-disk 2U Chassis
XS5226S	Single Controller	SFF 26-disk 2U Chassis
XS3226D	Dual Controller	SFF 26-disk 2U Chassis
XS3226S	Single Controller	SFF 26-disk 2U Chassis
XS1226D	Dual Controller	SFF 26-disk 2U Chassis

XS1226S	Single Controller	SFF 26-disk 2U Chassis
---------	-------------------	------------------------

Information contained in document has been reviewed for accuracy. But it could include typographical errors or technical inaccuracies. Changes are made to the document periodically. These changes will be incorporated in new editions of the publication. QSAN may make improvements or changes in the products. All features, functionality, and product specifications are subject to change without prior notice or obligation. All statements, information, and recommendations in this document do not constitute a warranty of any kind, express or implied.

Any performance data contained herein was determined in a controlled environment. Therefore, the results obtained in other operating environments may vary significantly. Some measurements may have been made on development-level systems and there is no guarantee that these measurements will be the same on generally available systems. Furthermore, some measurements may have been estimated through extrapolation. Actual results may vary. Users of this document should verify the applicable data for their specific environment.

This information contains examples of data and reports used in daily business operations. To illustrate them as completely as possible, the examples include the names of individuals, companies, brands, and products. All of these names are fictitious and any similarity to the names and addresses used by an actual business enterprise is entirely coincidental.

Table of Contents

Notices	i
VSS Application	1
Executive Summary.....	1
Audience	1
Overview.....	1
Environments.....	1
Configurations	2
Install VSS Software	2
Example of Using QVSSClient	6
Example of Using Symantec Backup Exec 2014	10
Apply To	23
References	24
Appendix	25
Related Documents.....	25
Technical Support	25

VSS Application

Executive Summary

This application note provides technical guidance for setting up VSS (Volume Shadow Copy Service) solution in Windows environment and making sure that the Symantec Backup Exec 2014 will be communicated with our snapshot mechanism in Windows server, and it leads XCubeSAN products being able to achieve real DR (Disaster Recovery) with snapshot consistency.

Audience

This document is applicable for QSAN customers and partners who are interested in purchasing Symantec Backup Exec 2014 as the backup solution of XCubeSAN series. It assumes the reader is familiar with QSAN products and has general IT experience, including knowledge as a system or network administrator. If there is any question, please refer to the user manuals of products, or contact QSAN support for further assistance.

Overview

This document introduces how to perform VSS (Volume Shadow copy Service) function on QSAN subsystem. The content in this document includes the QSAN VSS installation, how to use QSAN VSS client, and using Symantec Backup Exec to perform the VSS backup.

Environments

- ☒ Server / Host
 - Model: ASUS RS700
 - OS: Windows Server 2008 Enterprise edition
- ☒ Storage
 - Model: XCubeSAN X5224S
 - Memory: 8GB
 - Firmware: V1.4.1

☒ Software on Server / Host

QSAN_Storage_Service_Setup-2.0.7-x64-en.msi

Symantec Backup Exec 2014

Configurations

Install VSS Software

1. Run "QSAN_Storage_Service_Setup-2.0.7-x64-en.msi" to start the setup.
2. Click the Next button.



Figure 1 Install VSS Software Step 1

3. Check the License Agreement, and then click the Next button.

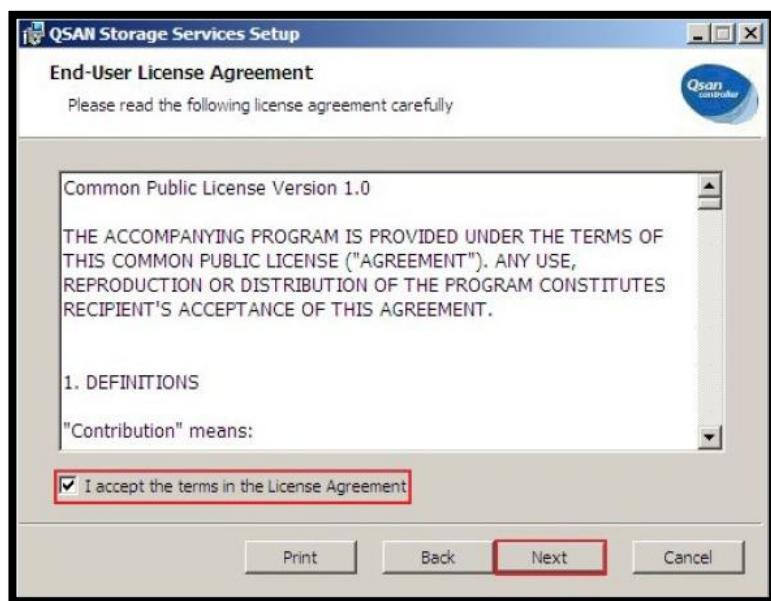


Figure 2 Install VSS Software Step 2

4. Click the **Browse...** button to change the install a\Program direct Files\QSAN\" . T h e the Next button.

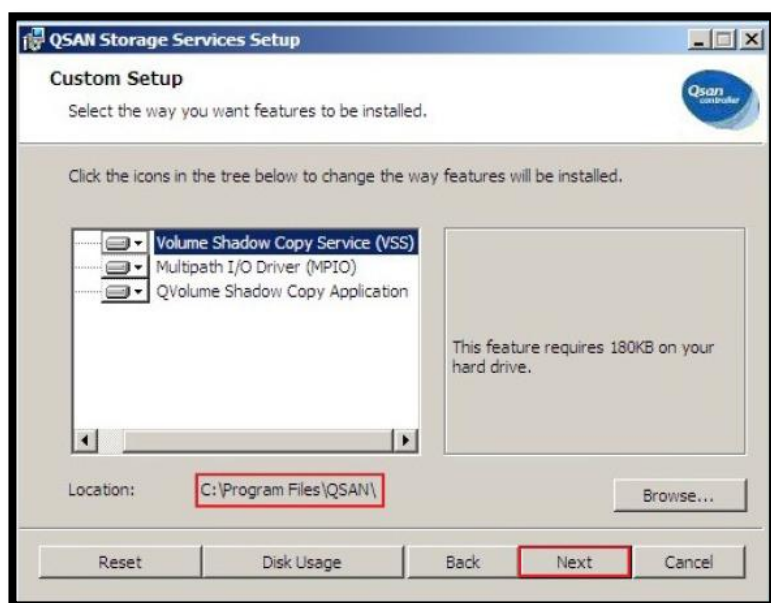


Figure 3 Install VSS Software Step 3

5. When completing all settings, click the Install button.



Figure 4 Install VSS Software Step 4

6. There is a Windows Security warning to make sure that this device software is trusted, and then click the Install button.

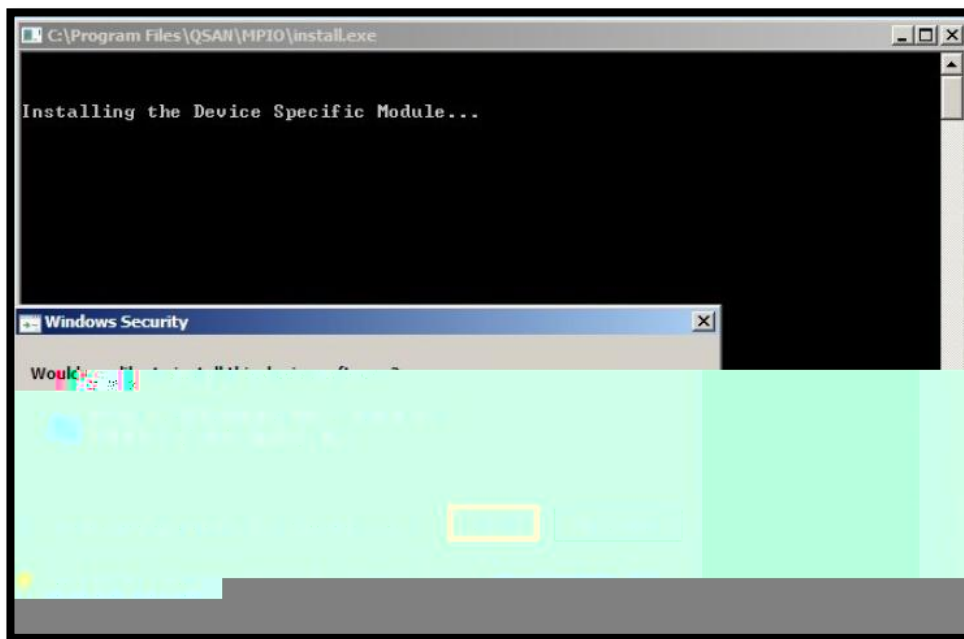


Figure 5 Install VSS Software Step 5

7. Click the Finish button to complete.



Figure 6 *Install VSS Software Step 6*

8. Please reboot the system to ensure the device software take effect.
9. After reboot, use the following Windows CLI command to check whether the QSAN VSS hardware provider is installed successfully.

```
C:> vssadmin list providers
```



Figure 7 *Check the VSS status*

Example of Using QVSSClient

1. Format the disk and assign a drive letter, for example "S:\". This volume is a virtual disk which comes from XS5224S.
2. Click the QVSSClient icon to run the application.

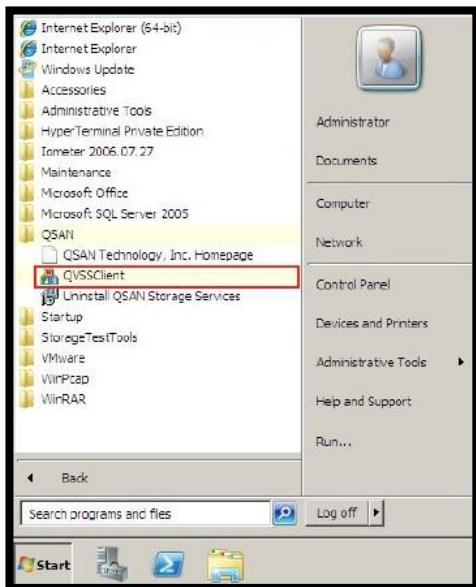


Figure 8 *Run QVSSClient*

3. Click the Create button. It will take a snapshot via VSS.

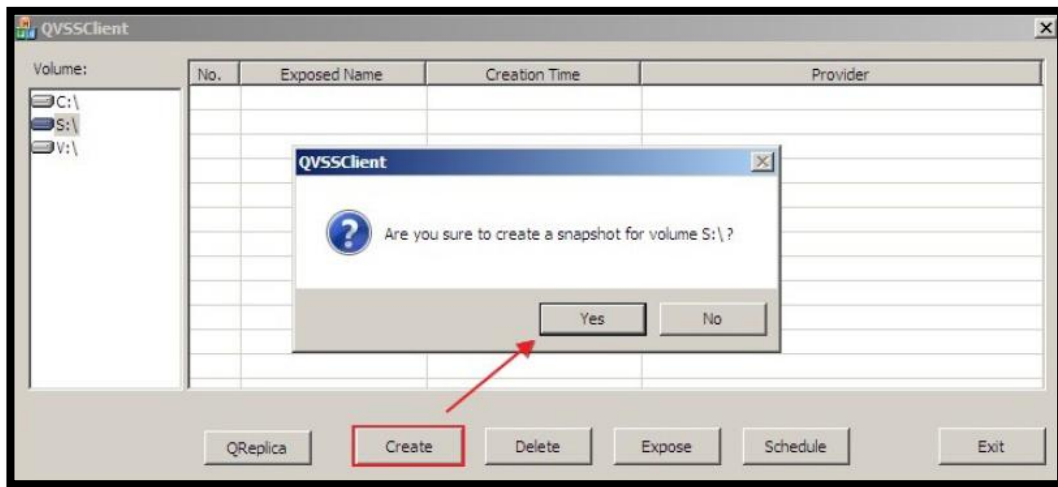


Figure 9 Create a Snapshot

4. The volume icon will be displayed in yellow while the QSAN VSS hardware provider is running.

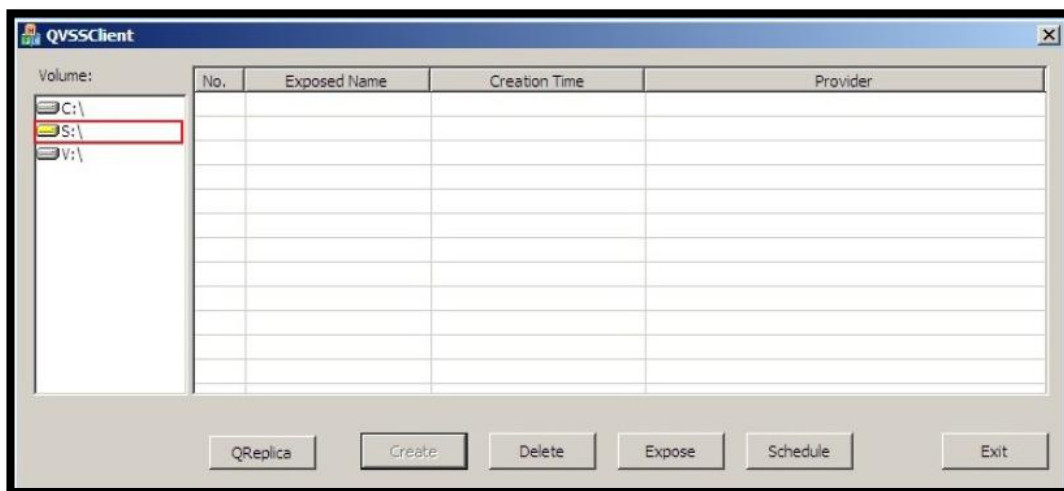


Figure 10 VSS Hardware Provider is Running

- Observe the event log on the XS5224S, there is an associated snapshot via the VSS.

Information	Tue, Aug 13, 2019 18:48:45	[CTR1] The LUN 2 is mapped to the volume ".
Information	Tue, Aug 13, 2019 18:48:45	[CTR1] The volume " has been created.
Information	Tue, Aug 13, 2019 18:48:45	[CTR1] A snapshot on the volume 'arthur-VD1' has been taken.

Figure 11 *Snapshot Event Log*

- Select the No. 1 column and click the Expose button, then select a folder. The snapshot will expose to a directory as a disk image format.

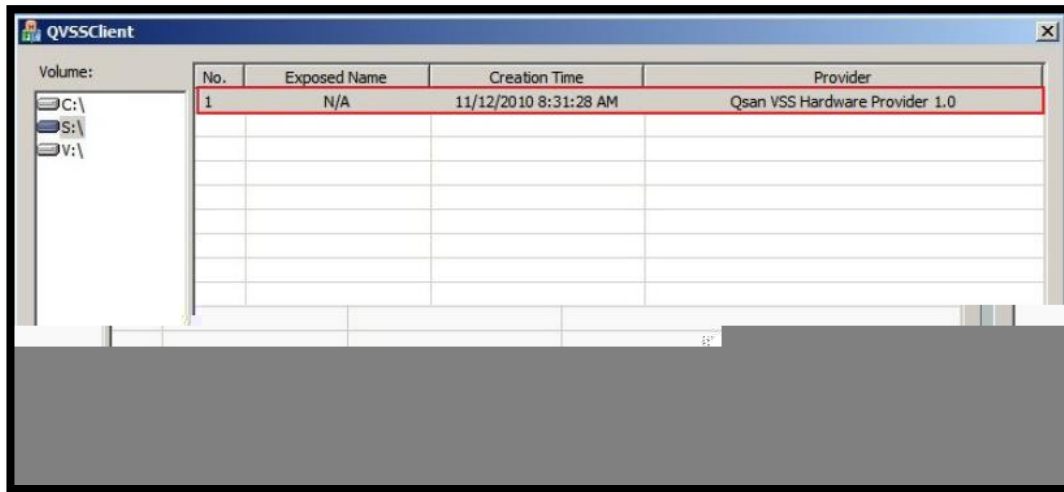


Figure 12 *Expose the Snapshot*

7. Click the Schedule button to enable taking snapshots by schedule.



Figure 13 Schedule the Snapshot

8. Click the Delete button to delete the snapshot.

Example of Using Symantec Backup Exec 2014

Part 1: Configure storage devices

1. Create volumes in drives E: and F: and backup.

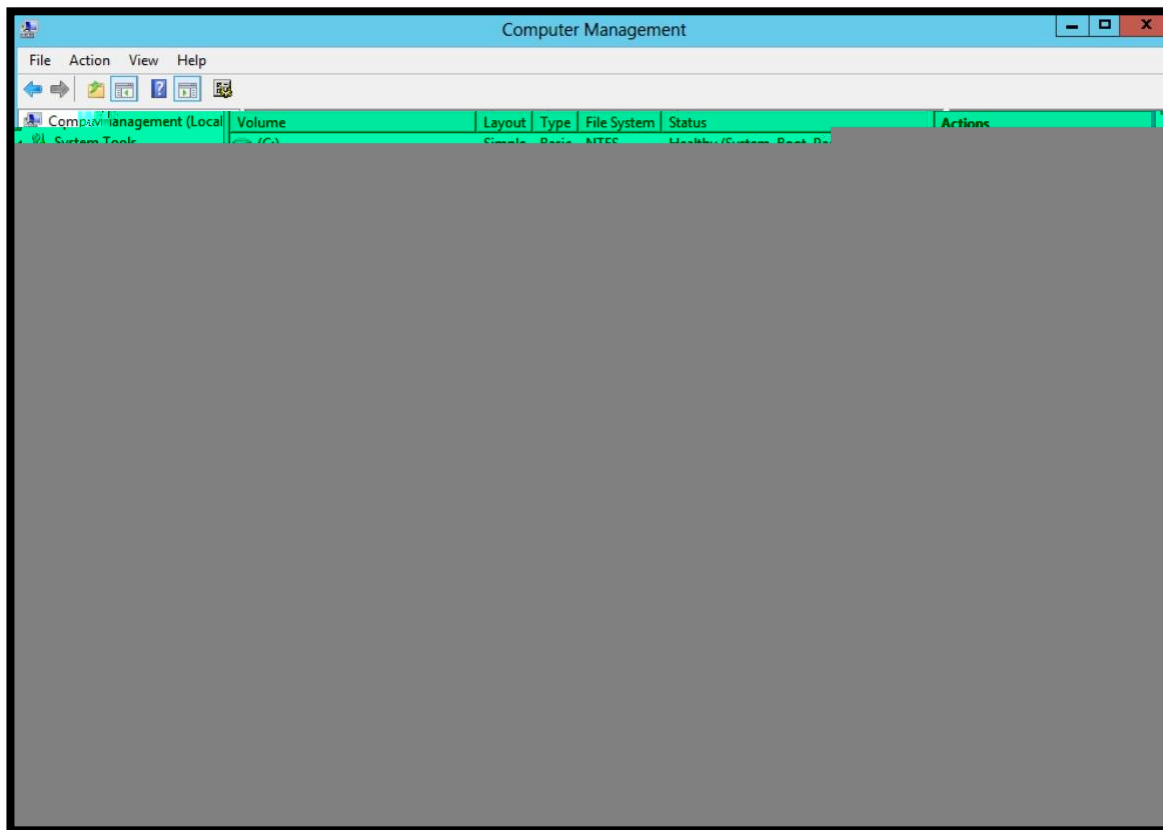


Figure 14 Create Volumes

2. First, click the Storage icon in Symantec Backup Exec 2014.

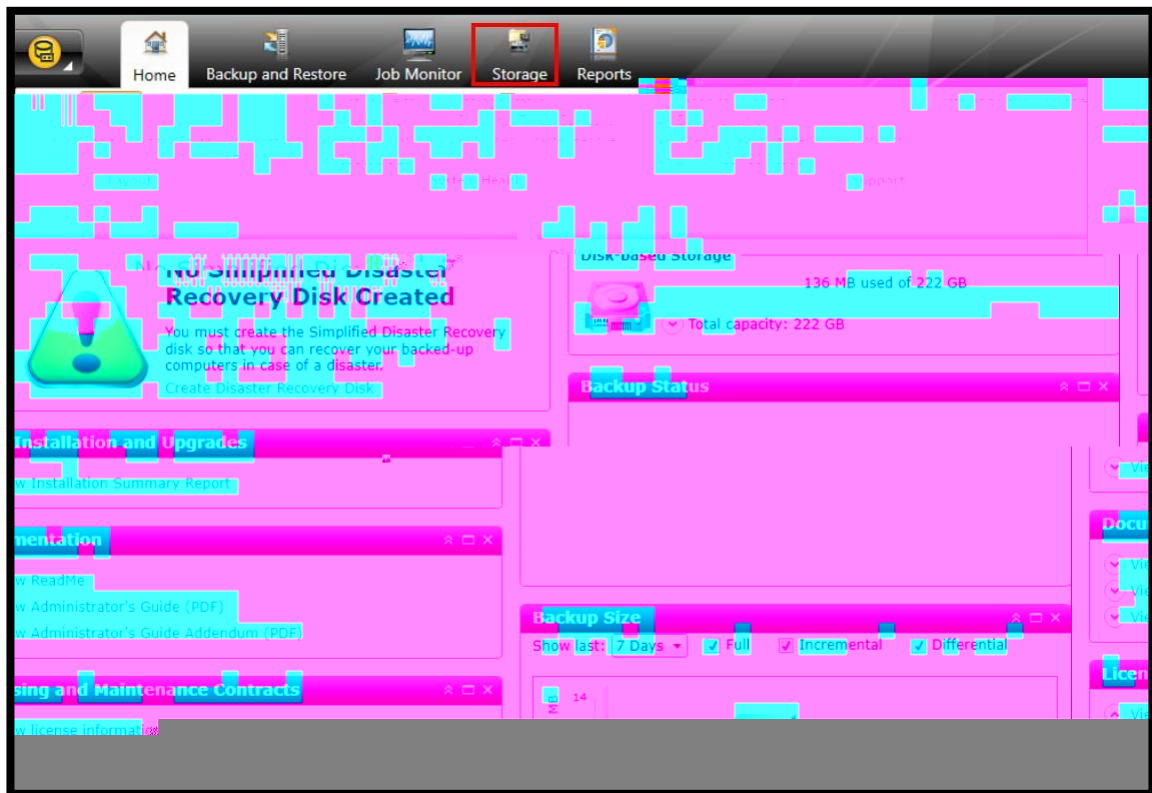


Figure 15 Storage in Symantec Backup Exec 2014

3. Select the Configure Storage icon in Storage page.

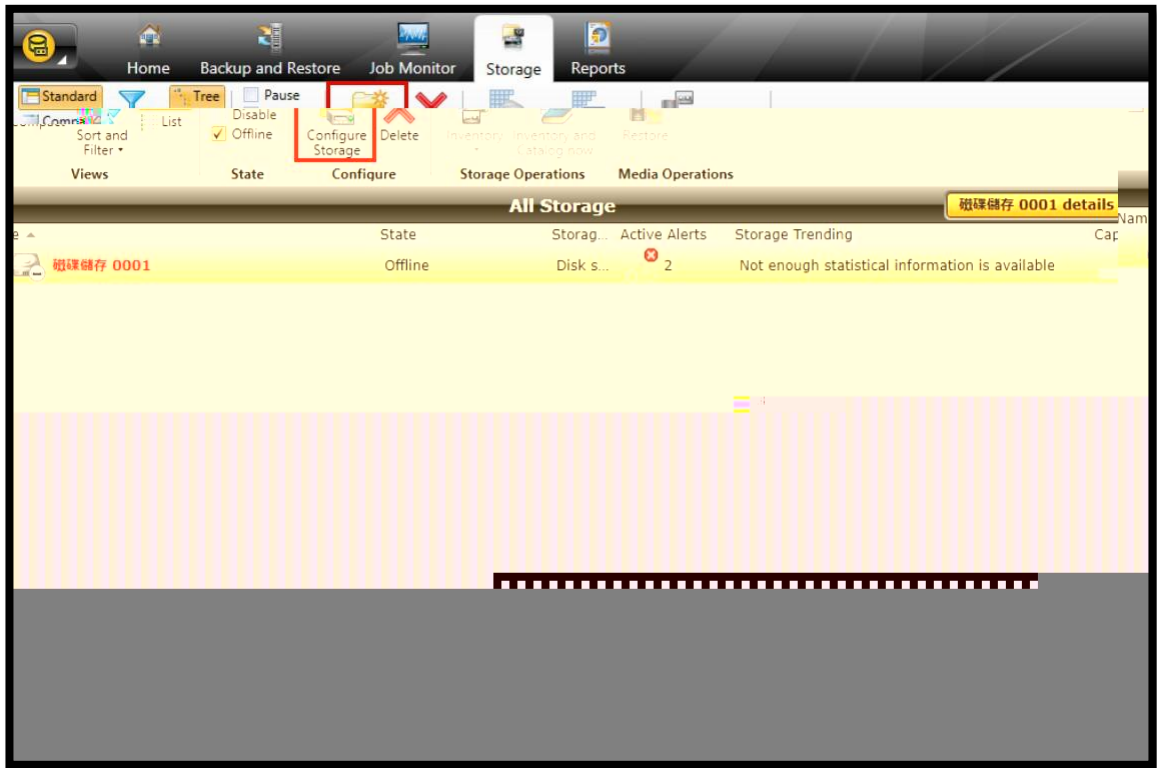


Figure 16 Configure Storage in Storage

4. Select the Disk-based storage item, and then click the Next button.

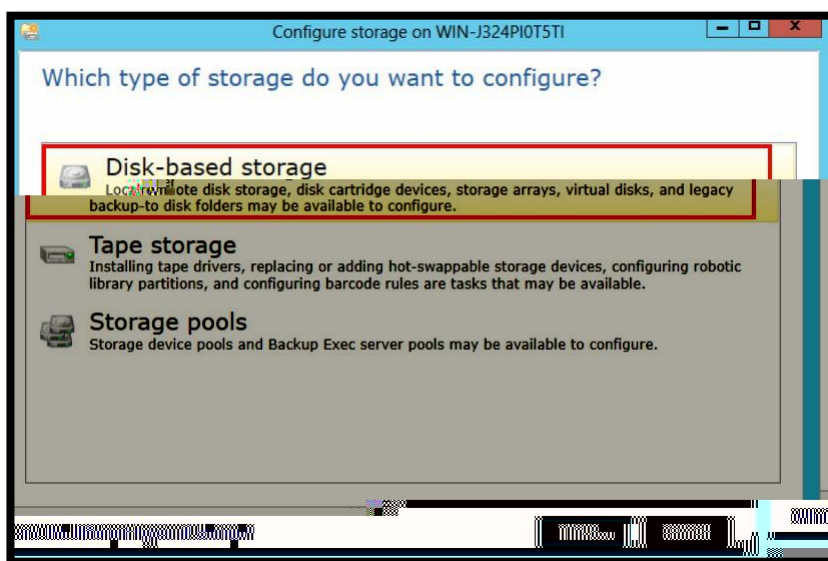


Figure 17 Select the Disk-based storage Item

5. Select the Disk Storage item, and then click the Next button.

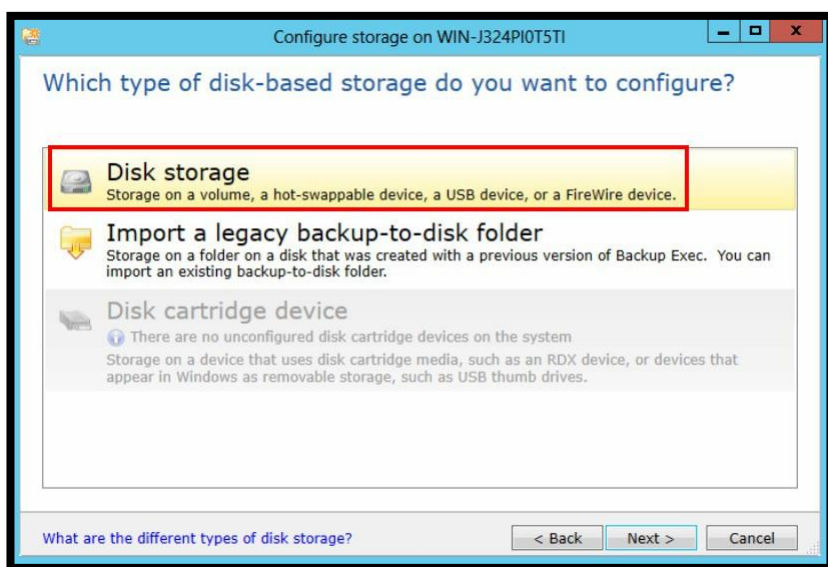
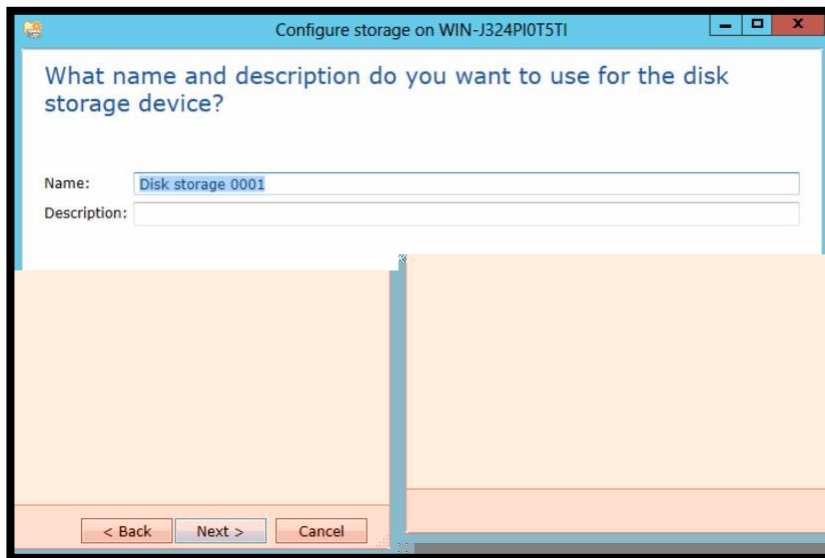


Figure 18 Select the Disk storage Item

6. Enter a name, and then click the Next button.



Configure storage on WIN-J324PI0T5T1

What name and description do you want to use for the disk storage device?

Name:

Description:

< Back Next > Cancel

Figure 19 *Enter a Name*

7. Select the storage device, let's take "F:" for testing.



Figure 20 *Select a Storage Device*

8. Set the Concurrent write operations to 2 for write process.



Figure 21 Set it to 2

9. Check the storage configuration summary.

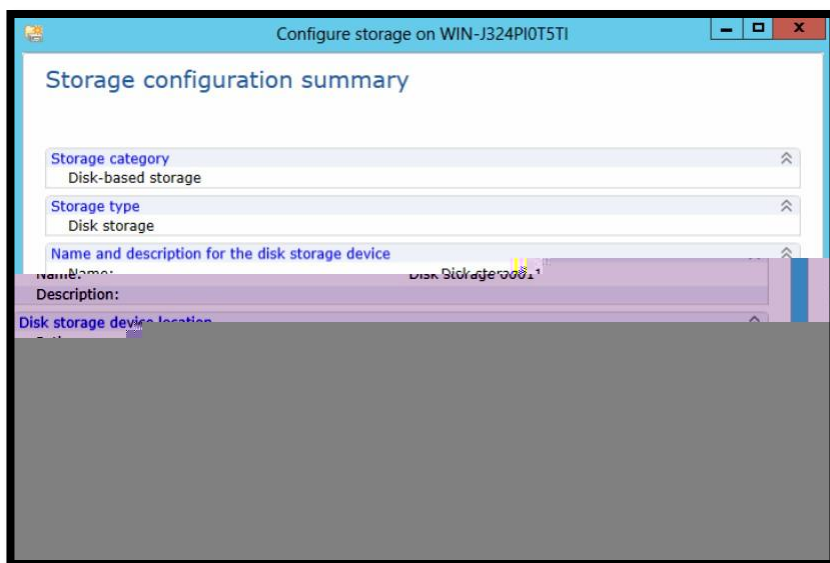


Figure 22 Storage Configuration Summary

Part 2: Perform the Symantec backup with VSS snapshot

1. Click the Backup icon in the Backup and Restore page, and then select the Back Up to Disk item.

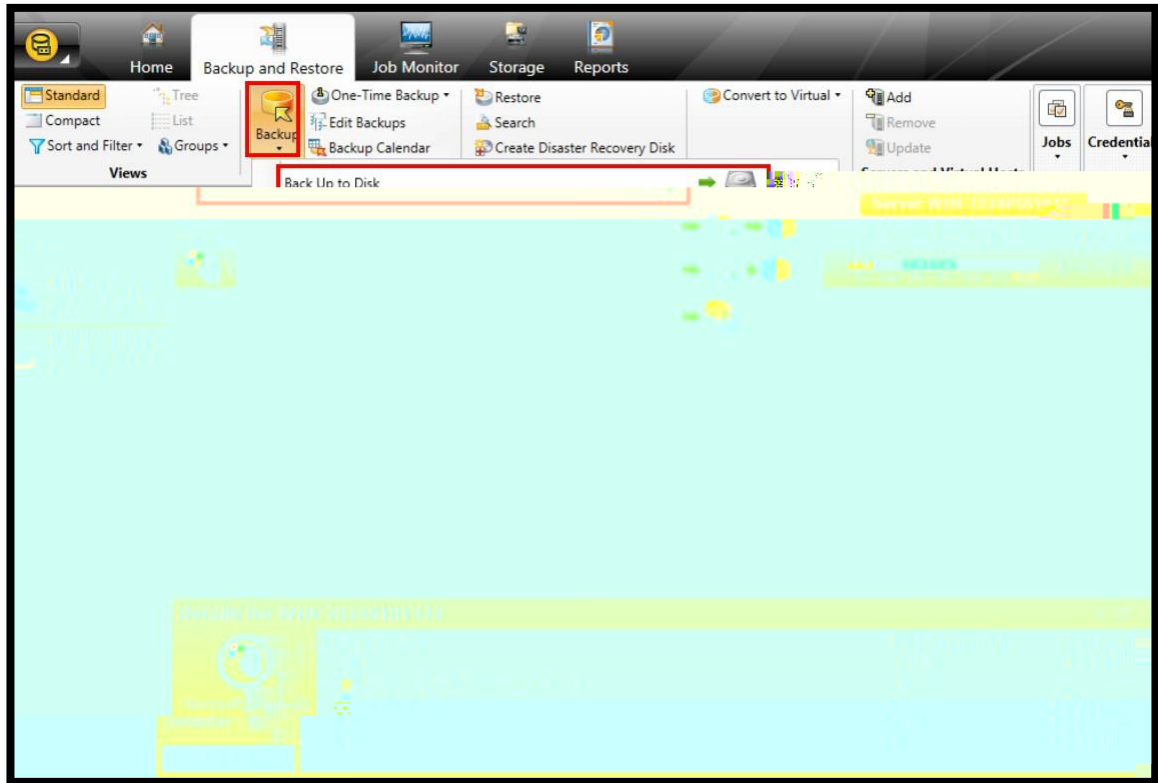


Figure 23 Backup in the Backup and Restore page

3. Select the drive letter "E:" for backup and then click the OK button.

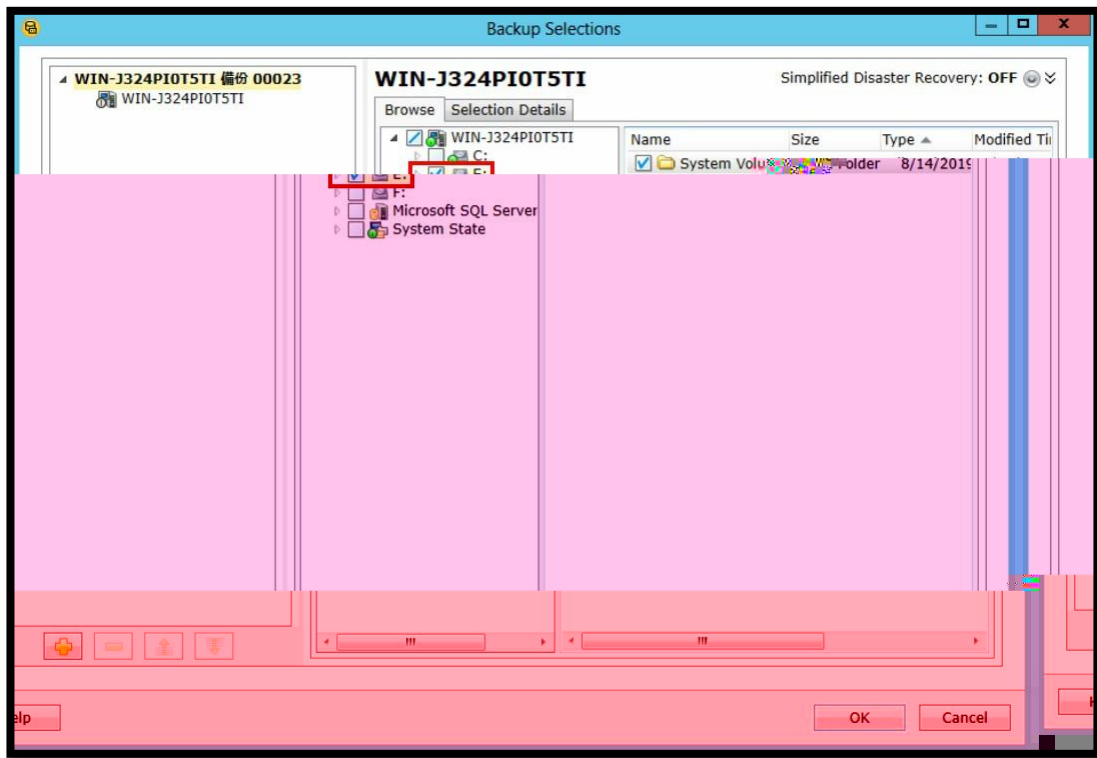


Figure 25 Select the Target

4. Click the Edit button at the right side to modify the backup setting.

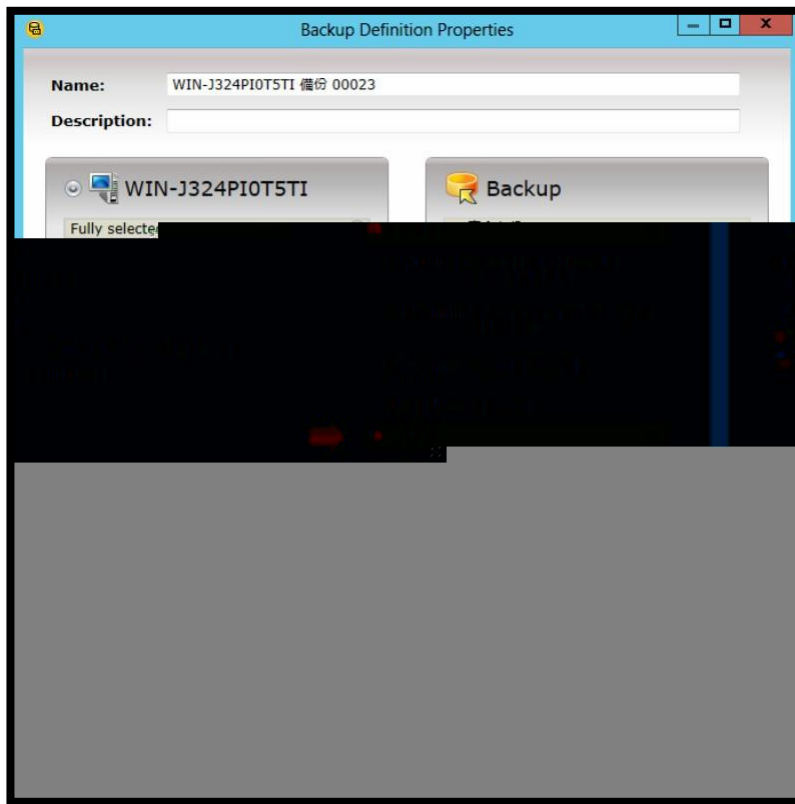


Figure 26 Modify the Backup Setting

5. In the Advanced Open File item, select the Hardware— Use technology provided by hardware manufacturer item. And then click the OK button.

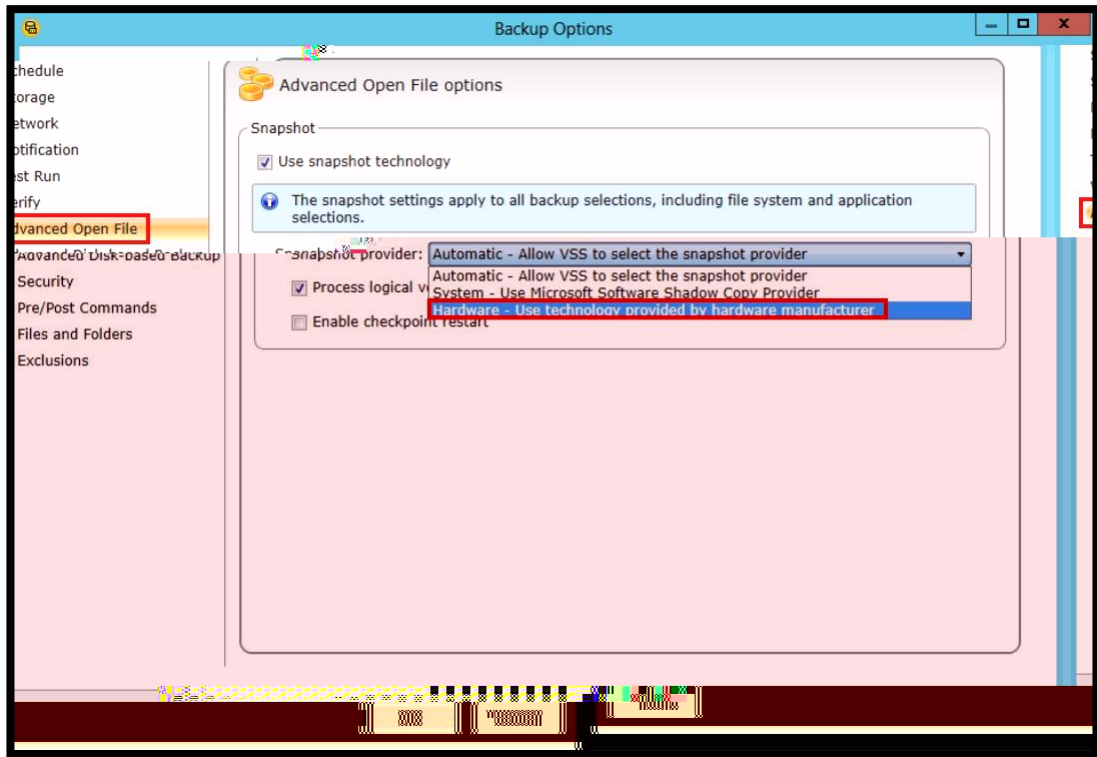


Figure 27 Settings in Advanced Open File

References

VSS (Volume Shadow Copy Service)

☞ https://en.wikipedia.org/wiki/Shadow_Copy

☞ <https://docs.microsoft.com/en-us/windows-server/storage/file-server/volume-shadow-copy-service>

Appendix

Related Documents

There are related documents which can be downloaded from the website.

- ☒ [All XCubeSAN Documents](#)
- ☒ [XCubeSAN QIG \(Quick Installation Guide\)](#)
- ☒ [XCubeSAN Hardware Manual](#)
- ☒ [XCubeSAN Configuration Worksheet](#)
- ☒ [XCubeSAN SANOS 4.0 Software Manual](#)
- ☒ [Compatibility Matrix](#)
- ☒ [White Papers](#)
- ☒ [Application Notes](#)

Technical Support

Do you have any questions or need help trouble-shooting a problem? Please contact QSAN Support, we will reply to you as soon as possible.

- ☒ Via the Web: https://www.qsan.com/technical_support
- ☒ Via Telephone: +886-2-77206355
(Service hours: 09:30 - 18:00, Monday - Friday, UTC+8)
- ☒ Via Skype Chat, Skype ID: qsan.support
(Service hours: 09:30 - 02:00, Monday - Friday, UTC+8, Summer time: 09:30 - 01:00)
- ☒ Via Email: support@qsan.com