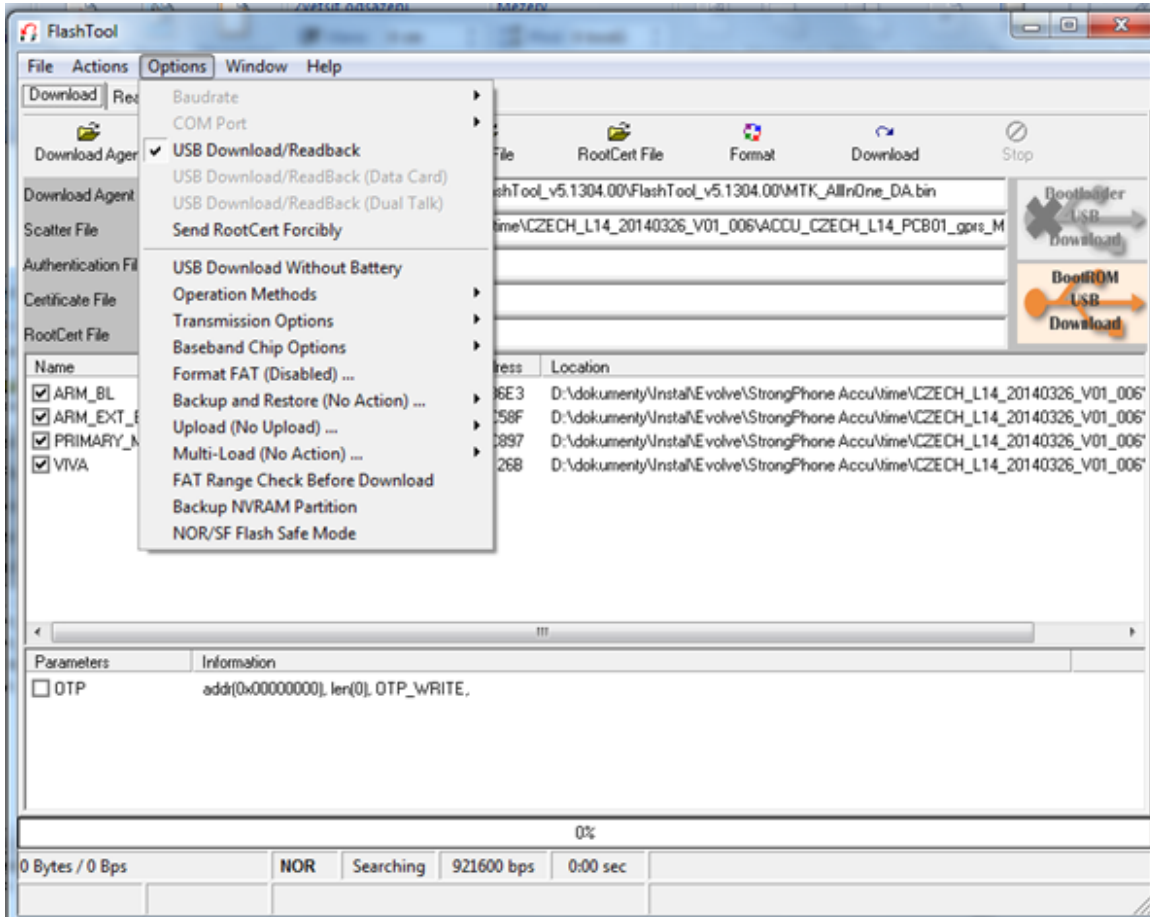


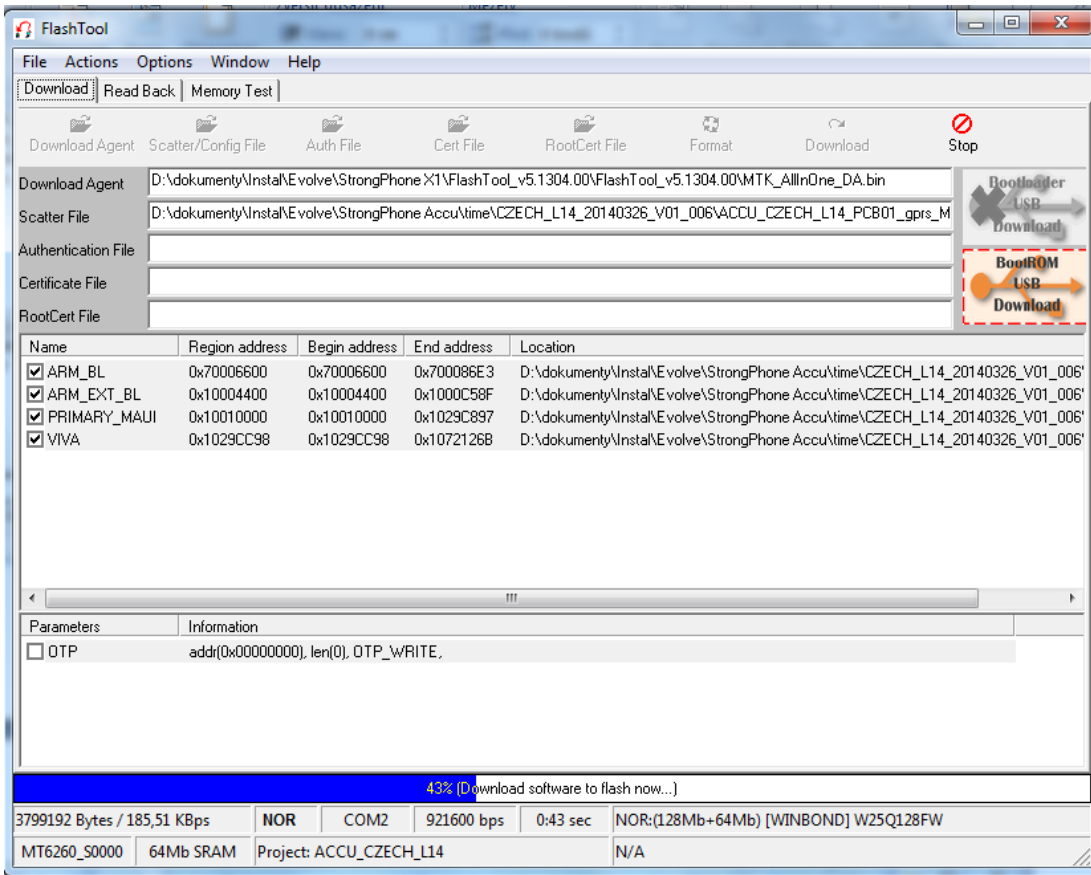
EVOLVEO StrongPhone Accu - instalation of firmware

(recommended: computer with WIN7, WIN8, WIN 8.1 and mobile phone battery charged to 50% of total capacity)

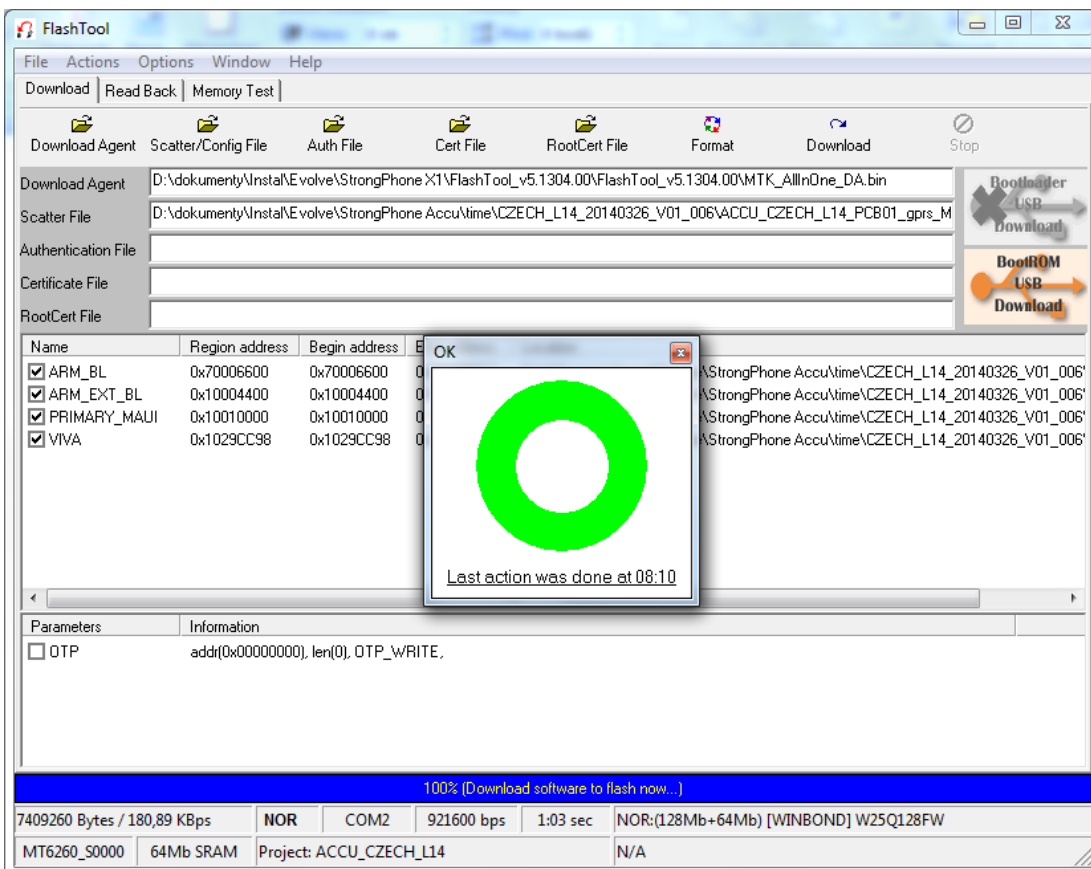
1. Download and unpack file **evolveo-strongphone-accu.zip**
2. Install driver for Windows /USB Driver/InstallDriver.exe
3. Run software for firmware upload /FlashTool_v5.1304.00/Flash_tool.exe
4. Set up in „FlashTool“ software „USB Download/Readback“ (see screen below)



5. Set up in „FlashTool“ software „Scatter/Config File“, choose file - evolveo-strongphone-accu.zip\evolveo-strongphone-accu\ACCU_CZECH_L14_PCB01_gprs_MT6260_S00.MAUI_11B_W13_08_MP_V3.bin /TELSDA60A_11B_BB.cfg
6. Click to the icon „Download“ and insert USB cable into USB port of your computer. Insert USB cable into phone, which is turned off (no power on) and push mobile phone keyboard button „0“ (zero). Installation of driver for the mobile phone will begin.



7. After installation you will see green circle „OK“ icon.



8. New firmware is installed and you can unplug mobile phone from USB and turn mobile phone on.
9. Quick switch of language: push middle phone keyboard button to the right and choose your language.