

EVOLVEO

Detective D04

User's installation and operation Manual

www.evolveo.com

NVR

User's installation and operation Manual

Important Safeguards and Warning:

Do not place heavy objects on the NVR.

Do not let any solid or liquid fall into or infiltrate the NVR

Please brush printed circuit boards,connectors,fans,machine box and so on regularly.Before the dust cleaning please switch off the power and unplug it.

Do not disassemble or repair the NVR by yourself.Do not replace the components by yourself.

Environment:

Please place and use the NVR between 0 and 40 degrees.Avoid direct sunlight.Stay away from heat source.

Do not install the NVR in the damp environment.

Do not use the NVR in smoky or dusty environment.

Avoid collision or strong fall.

Please insure the NVR level installation in a stable workplace.

Please install in ventilated place.Keep the vent clean.

Use within the rating input and output scope.

Directory

1 Production Introduction	5
1.1 Product overview	5
1.2 Main functions	5
2 Open-package check and cable connections	6
2.1 Open-package check	6
2.2 Hard disk installation	7
2.3 Shelf installation	7
2.4 video input and output connections	8
2.4.1 Video input connections	8
2.4.2 Video output connections and options	8
3 Basic operation.....	8
3.1 Turn on.....	8
3.2 Turn off	9
3.3 System Login	9
3.4 Preview	10
3.5 Desktop shortcut menu.....	11
3.5.1 Main menu.....	12
3.5.2 Playback	12
3.5.3 Record Control.....	14
3.5.4 Output Adjust.....	15
3.5.5 Logout	16
3.5.6 Full screen (leave full screen)	16
4 Main menu	16
4.2 Record.....	18
4.2.2 Playback	20
4.2.3 Backup	20
4.3 Alarm Function	21
4.3.1 Motion Detect.....	21
4.3.2 Video Blind	23
4.3.3 Video Loss.....	24
4.3.4Abnormal.....	24
4.4 System setup	25
4.4.1 General	25
4.4.2 Network setup	27
4.4.3 NetService	28
4.4.4 GUI Display	34
4.4.5 RS485	35
4.4.6 RS232	36
4.4.7 Tour.....	36
4.4.8 Channel manage	37
4.5 Advanced.....	41
4.5.1 HDD Manage	41
4.5.2 Account	41
4.5.3 Online user	44

4.5.4 Output adjust.....	44
4.5.5 Auto Maintain	44
4.5.6 Restore.....	45
4.5.9 Import / Export.....	46
4.6 Info.....	46
4.6.1 HDD info	46
4.6.2 BPS.....	47
4.6.3 Log.....	47
4.6.4 Version	48
4.7 Shut down system	48
5 Cloud Technology Basic Operation	48
6 FAQ and maintenance	54
6.1 FAQ.....	54
6.2 Maintenance.....	60
Appendix 1.Remote controller operation	61
Appendix 2.Mouse operation.....	62
Appendix 3.Hard disk capability calculation	63

1 Production Introduction

1.1 Product overview

The series NVR is designed specially for security and defence field which is an outstanding digital surveillance product. It introduces embedded LINUX operating system which is more stable. It introduces standard H.264mp video compressed format and G.711A audio compressed format which insures the high quality image, low error coding ratio and single frame playing. It introduces TCP/IP network technology which achieves the strong network communication ability and telecommunication ability.

The series NVR can be used individually or online applied as a part of a safety surveillance network. With the professional network video surveillance software it achieves the strong network communication ability and telecommunication ability.

The series NVR can be applied in the bank, telecom, electric power system, judicial system, transportation, intelligent housing, factory, storehouse, water conservancy and so on.

1.2 Main functions

Real-time surveillance

- analog VGA interface and HDMI interface,surveillance function through monitor or display.

Storage

- non-working hard disk dormancy processing which is convenient to radiate heat, reduce power and extend the life-span
- special storage format which insures the data safety

Backup

- through SATA interface and USB interface such as USB equipment, removable hard disk and so on.
- through net download the files in the hard disk

Playback

- individual real-time video recording as well as searching, playback, network surveillance, recording check, downloading and so on
- multi-playback mode
- zoom at arbitrary region

Net operating

- through net tele-surveillance in the real time
- tele-recording check and real-time playback

Communication interface

- RS485 interface which fulfills the alarm input and PTZ control

Intelligent operating

- mouse action function
- fast copy and paste operating for the same setting

2 Open-package check and cable connections

2.1 Open-package check

When you receive the NVR, please check first.

First, please check whether there is any visible damage to the package appearance. The protective materials used for the package of the NVR can protect most accidental clashes during transportation.

Then, please open the box and get rid off the plastic protective materials. Check whether there is any visible damage to the NVR appearance.

At last, please open the machine crust and check the data wire in the front panel, power wire, the connection between the fan power and the main board.

1.Front panel and rear panel

- ◆ The key function specification in the front panel and the interface specification in the rear panel are in the specification.
- ◆ Please check the product type in the front panel whether is accordant with the product type you order.

The label in the rear panel is very important for the after service. Please protect it carefully. When you contact us for after service, please provide the product type and serial number in the label.

2.Check

After open the cover,you should check if it has obvious damage trace,also please check the front panel data cable,power cord and motherboard's connection are loose or not.

2.2 Hard disk installation

For the first use, please install the hard disk, this machine box can install two hard disk (no limited capacity).



① disassemble the screw



② disassemble the cover



③ fix the screw of hard disk



④ fix the screw of hard disk



⑤ connect the data wire



⑥ connect the power wire



⑦ cover the machine



⑧ fix the cover

2.3 Shelf installation

This product chassis specification for the standard 1u, so it can be installed in the standard shelf.

Installation steps and attention items:

1. Make sure the temperature in the room lower than 35 °C (95 °F).
2. Keep the equipment have 15cm (6 inches) space around in order to air's circulation.
3. From bottom to shelf installation.
4. When multiple components install in the shelf, please take preventive measures to avoid power socket overload.

2.4 video input and output connections

2.4.1 Video input connections

Having no video input interface.

Insure the vidicon signal stable and credible:

The vidicon should be installed in the appropriate location where is away from backlighting and low illumination or adopts the better backlighting and low illumination compensation.

The ground and power supply of the vidicon and the NVR should be shared and stable.

2.4.2 Video output connections and options

The video output is divided into PAL/NTSC HDMI and VGA output(selective configuration).

When replace the monitor by the computer display, there are some issues to notice:

1. Do not stay in the turn-on state for a long time.
2. Keep the computer display normal working by demagnetizing regularly.
3. Stay away from the electro magnetic Interference.

TV is not a credible replacement as a video output. It demands reducing the use time and control the power supply and the interference introduced by the nearby equipments strictly. The creepage of low quality TV can lead to the damage of other equipments.

3 Basic operation

Note: The button in gray display indicates nonsupport.

3.1 Turn on

Plug the power supply. Power supply indicator light shining indicates turning on the video recorder. After the startup you will hear a beep. The default setting of video output is multiple-window output mode. If the startup time is within the video setting time, the timing video recording function will start up automatically. Then the video indicator light of corresponding channel is shining and the NVR is working normally.

Note:1. Make sure that the input voltage corresponds with the switch of the NVR power supply.

2. Power supply demands: 220V±10% /50Hz.

Suggest using the UPS to protect the power supply under allowable conditions.

3.2 Turn off

Entering [main menu] and choosing [turn off] in the [turn off the system] option is called soft switch.

Illumination:

1. Auto resume after power failure

If the NVR is shut down abnormally, it can automatically backup video and resume previous working status after power failure.

2. Replace the hard disk

Before replacing the hard disk, the power supply switch in the real panel must be turned off.

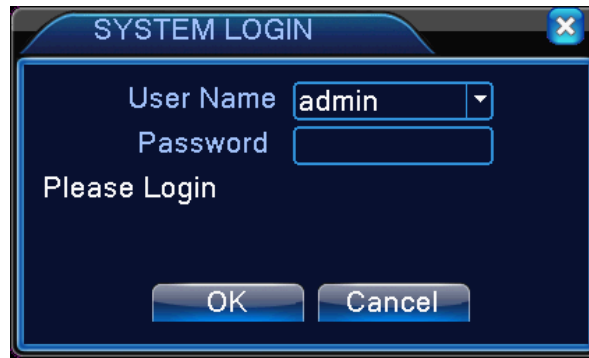
3. Replace the battery

Before replacing the battery, the setting information must be saved and the power supply switch in the real panel must be turned off. The NVR uses button battery. The system time must be checked regularly. If the time is not correct you must replace the battery, we recommend replacing the battery every year and using the same battery type.

Note: The setting information must be saved before replacing the battery otherwise information will lose.

3.3 System Login

When the NVR boots up, the user must login and the system provides the corresponding functions with the user purview. There are three user settings. The names are **admin**, **guest** and **default** and these names have no password. **Admin** is the super user purview; guest and **default**'s permissions are preview and video playback. User **admin** and **guest**'s password can be revised, while their permissions can't be revised; user **default** is the default login user whose permission can be revised but not its password.



Picture 3.1 System Login

Password protection: If the password is continuous wrong three times, the alarm will start. If the password is continuous wrong five times, the account will be locked. (Through reboot or after half an hour, the account will be unlocked automatically).

For your system security, please modify your password after first login.

3.4 Preview

You can right click mouse to choose the switch between the windows.

The system date, time and channel name are shown in each viewing window. The surveillance video and the alarm status are shown in each window.





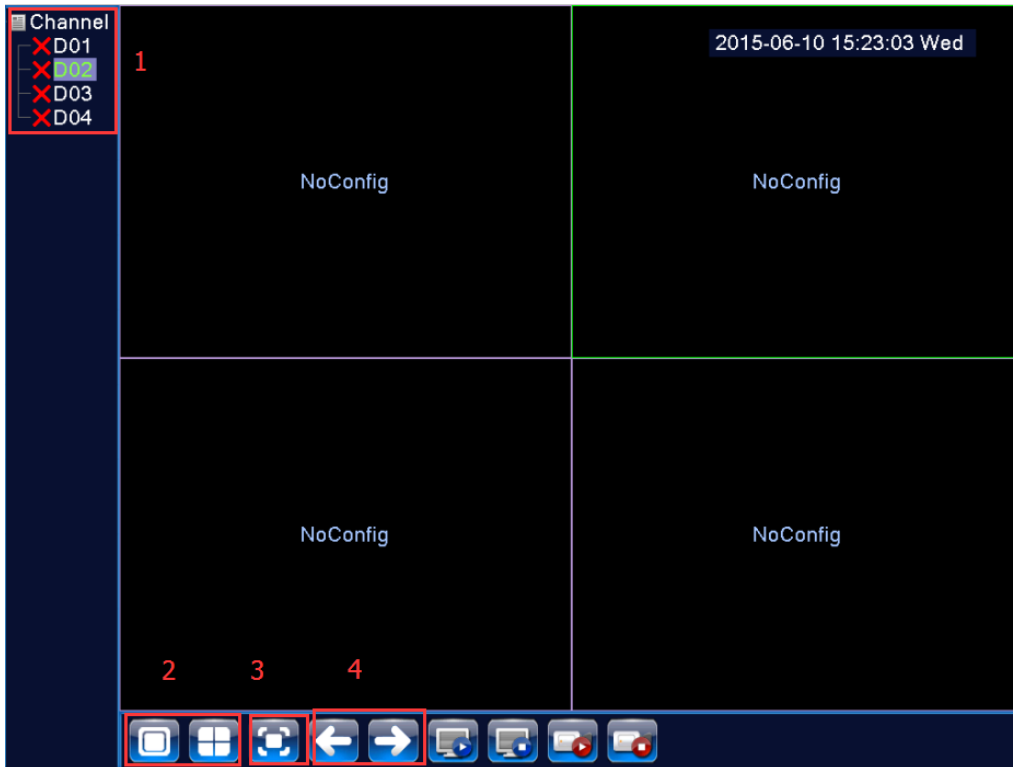
1		Recording status	3		Video loss
2		Motion detect	4		Camera lock

Table 3.1 Preview icon



Pic 3.2 Preview interface

(1)	Channel name and status display,click "channel" can pack up	(2)	Screen switch
(3)	Full screen display	(4)	on the next page turning,when choosing a non maximum number of channels,the operation can be carried out

Note:It's main stream's resolution under single window,and it's extra stream's resolution under multi-screen.

3.5 Desktop shortcut menu

In preview mode you can right click mouse to get a desktop shortcut menu,as the picture 3.2 shows.The menu includes: **main menu, record mode, playback, PTZ control, High Speed PTZ, Alarm Output,Output adjust, Logout, full screen(leave full screen).**



Picture 3.3 Shortcut Menu

Note:When under non full screen display”full screen”,and when under full screen display”leave full screen”.

3.5.1 Main menu

When you login, the system main menu is shown as below.



Pic 3.4 Main menu

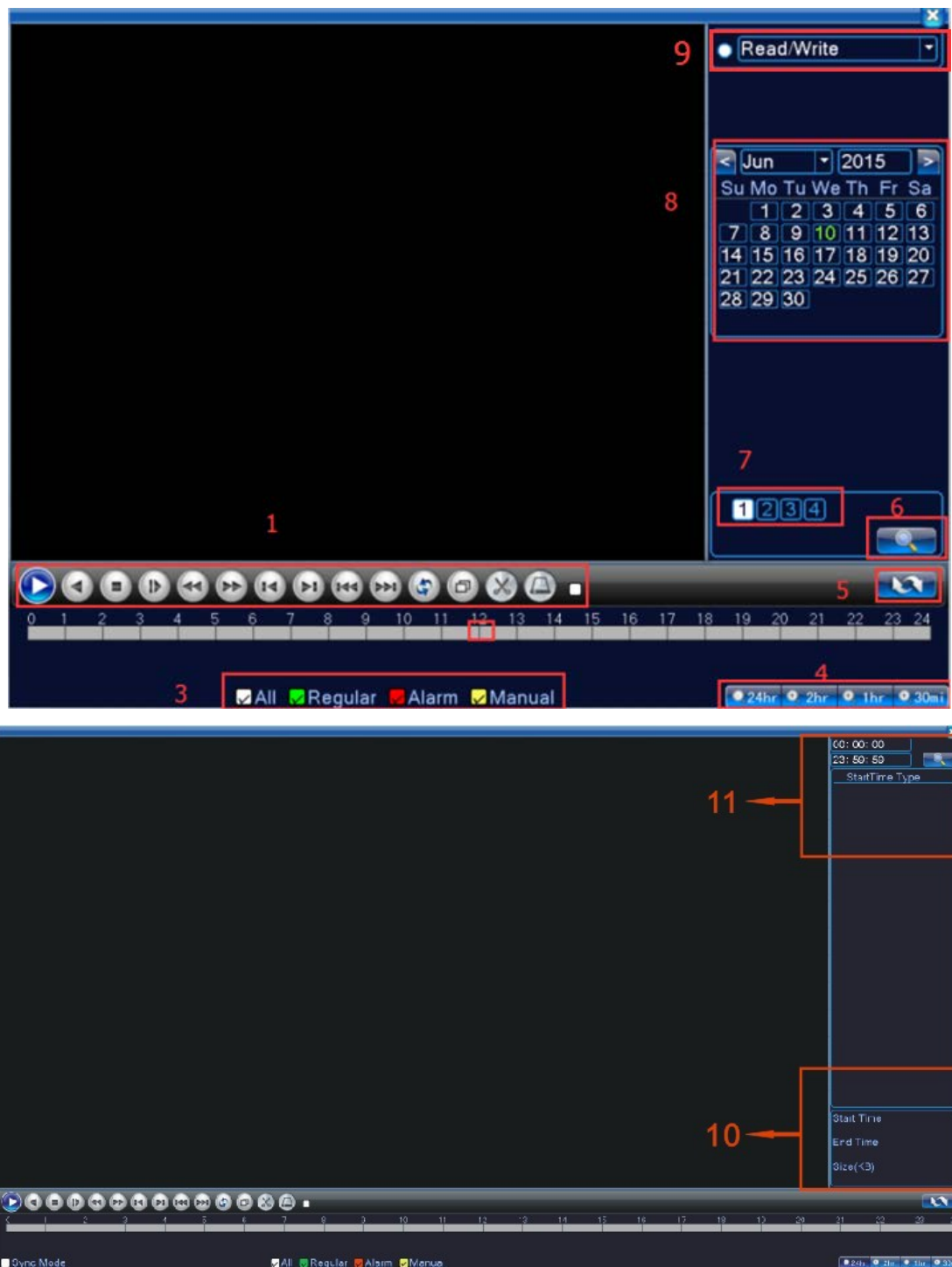
3.5.2 Playback

There are two methods for you to play the video files in the hard disk

1. In the desktop shortcut menu

2.Main Menu>Record>playback

Note: The hard disk which saves the video files must be set as read-write or read-only state.



Pic 3.5 Video playback

1	Playback control	2	Operation hint	3	Record mode	4	Time interval choosing
5	Switch by	6	File searching	7	Channel	8	Date choosing

	time,file mode				choosing		
9	Storage device choosing	10	File information	11	Listed files	12	Time searching

【Listed files】 Look up the listed files that accord with the searching criteria.

【File information】 Look up the found file information.

【Playback control】 See detail in below chart












Button	Function	Button	Function
	Play/Pause		Backward play
	Slow forward		Fast forward
	Previous frame		Next frame
	Previous file		Next file
	Round play		Full screen
	Stop		

Table 3.2 Playback control key

Note: play under frame by frame, the playback status should be paused firstly.

【Operation hint】 show function of the key that cursor placed.

Special functions:

Local zoom:When the system is in single-window full-screen playback mode, you can drag your mouse in the screen to select a section and then left click mouse to realize local zoom. You can right click mouse to exit.

Note: When current resolution of the channel is over Max resolution, to playback this channel, will show a Red “X”.

3.5.3 Record Control

Please check current channel status: “○” means it is not in recording status, “●” means it is in recording status.

You can use desktop shortcut menu or click [Main menu]> [Record]> [Record Conf] to enter the

recording control interface.



Pic 3.6 Record Mode

【Schedule】 Record according to the configuration.

【Manual】 Click the all button and the according channel is recording no matter the channel in any state.

【Stop】 Click the stop button and the according channel stops recording no matter the channel in any state.

3.5.4 Output Adjust

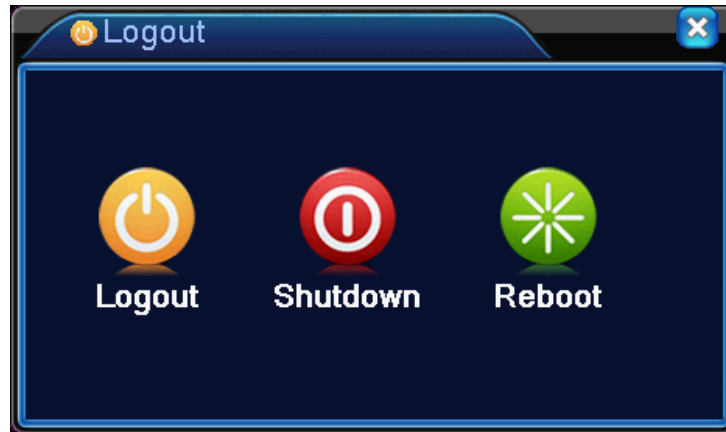
Adjust TV output area parameters. You can use the desktop shortcut menu or enter [Main menu]> [Advanced]> [Output Adjust].



Pic 3.15 Output Adjust

3.5.5 Logout

Logout, shut down the system or reboot up. You can use the desktop shortcut menu or enter [main menu].



Pic 3.16 Logout

【logout】 Quit the menu. Offer password next entrance.

【shut down】 Quit the system. Turn off the power supply.

When press the shut down button, there is schedule hint. After three seconds, the system is shut down. Cancel midway is of no effect.

【reboot】 Quit the system. Reboot up the system.

3.5.6 Full screen (leave full screen)

According demand to choose full screen or non full screen.

4 Main menu

4.1 Main menu navigation

Main menu	Sub menu	Function
Record	Record conf	Set the recording configuration, recording type, recording time section
	Playback	Set recording search, recording play, video file storage
	Backup	Detect backup device, format device, back the selective files

Alarm	Motion detection	Set motion detect alarm channel,linkage parameters: defending time section, alarm output, screen hint, recording, PTZ, tour, buzz, email and FTP upload.
	Video blind	Set video blind alarm channel,linkage parameters: defending time section, alarm output, screen hint, recording,PTZ, tour, buzz, email and FTP upload.
	Video loss	Set video loss alarm channel, linkage parameters: defending time section, alarm output, screen hint, recording,PTZ, tour, buzz,email and FTP upload.
	Alarm input	Set alarm input channel, equipment type, linkage parameters: defending time section, alarm output, screen hint,recording,PTZ, tour, buzz, email and FTP upload.
	Alarm output	Set alarm mode: configuration, manual, stop
	Abnormality handling	No HDD, HDD error, HDD capacity not enough, network cut, IP Conflict, linkage parameters, screen hint or buzz.
System configuration	General configuration	Set system time, data format,date separator,time format,language, HDD full operation, machine No, video standard, Auto logout,DST, machine name.
	Network configuration	Set basic network parameters, DHCP and DNS parameters, network high speed download.
	NetService	PPPOE、NTP、Email、IP Filter、DDNS parameter and so on.
	GUI display	Set channel title, preview hint icon state, transparency, cover area, time title, channel title fold.
	RS485	Set protocol,address,baudrate,data bits,stop bits,parity.
	RS232	Set serial port function,baudrate,data bits,stop bits and parity.
	Tour	Set patrol mode and interval time
	Digital	Set channel mode, check channel status and configure the digital channel, etc.

Management tools	Hard disk management	Set appointed hard disk as read/write disk, read-only disk or redundant disk, format disk, recover and so on
	User management	Modify user, team or password. Add user or team. Delete user or team
	Online user	Break the connection with the already login user. Lock the account after break until booting up again.
	Output adjust	Adjust top deflate, bottom deflate, left deflate, right deflate.
	Automatic maintenance	Set automatic reboot system and automatic deleting files.
	Restore	Restore setting items states:general,record conf,alarm set,network,netservice,GUI display,account,RS232.
	Upgrade	upgrade with external device(like USB)
	Device Info	device hardware configuration and message
	Import/Export	Export the device's log or configuration to external device(like USB flash disk);Input the configuration with external device(like USB flash disk).
System information	HDD info	Display hard disk capability and recording time
	BPS	Display code stream information
	Log	Clear all log information according to the log video and time
	Version	Display version information
Shut down		Logout, shut down or reboot

4.2 Record

Operations related to record, including: Record, Playback, Backup

4.2.1 Record Configuration

Set the recording parameters in the surveillance channel. The system is set 24 hours consecutive recording in the first startup. You can enter [Main Menu]> [Record> [Record Conf] to set.

Note:There is at least one read-write hard disk. (refer to chapter 4.5.1)



Picture 4.1 Record Conf

【Channel】 Choose the corresponding channel number to set the channel. Choose the all option to set the entire channels.

【Redundancy】 Choose the redundancy function option to implement the file double backup function. Double backup is writing the video files in two hard disks. When you do the double backup, make sure that there are two hard disks installed. One is read-write disk and the other is redundant disk. (refer to 4.5.1)

【Length】 Set the time length of each video file. 60minutes is default value.

【Pre-Record】 Record 1-30 seconds before the action. (time length is decided by the code stream)

【Record mode】 Set video state: schedule, manual or stop.

Schedule: Record according to the set video type (common, detection and alarm) and time section.

Manual: Click the button and the according channel is recording no matter the channel in any state.

Stop: Click the stop button and the according channel stops recording no matter the channel in any state.

【Period】 Set the time section of common recording, The recording will start only in the set range.

【Record type】 Set recording type: regular, detection or alarm.

Regular: Perform the regular recording in the set time section. The video file type is “R”.

Detect: Trigger the “motion detect”, “camera mask” or “video loss” signal. When above alarm is set as opening recording, the “detection recording” state is on. The video file type is “M”.

Alarm: Trigger the external alarm signal in the set time section. When above alarm is set as opening recording, the “detection recording” state is on. The video file type is “A”.

Note: Refer to chapter 4.3 to set corresponding alarm function.

4.2.2 Playback

Refer to chapter 3.5.2.

4.2.3 Backup

You can backup the video files to external storage through setup.

Note: The storage must be installed before the file backup. If the backup is terminated, the already backup can playback individually.



Picture 4.2 detect storage device

【Detect】 Detect the storage connected with the NVR such as hard disk or universal disk.

【Backup】 Click backup button and the dialog box is popped up. You can choose the backup file according to the type, channel and time.

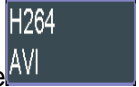


Picture 4.3 Backup

Remove: Clear the file information.

Add: Show the file information satisfying the set file attributes.

Backup format: configure the backup file format, according to require, can choose



Start/pause: Click the play button to start the backup and click the pause button to stop the backup.

Note: During backup you can exit the page layout to carry out other functions.

【Burning】 the file will be burned synchronously after click it.

【Erase】 Choose the file to delete and click erasure to delete the file.

【Stop】 Stop the backup.

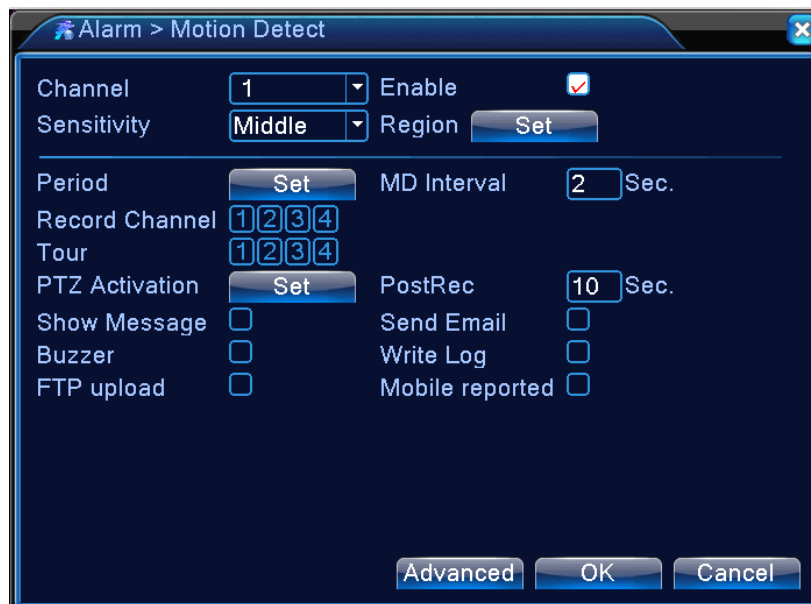
4.3 Alarm Function

Alarm functions include: motion detect, video blind, video loss, alarm input and alarm output, abnormality.

4.3.1 Motion Detect

When system detects the motion signal that reaches the set sensitivity, the motion detect alarm is on and the linkage function is turned on.

Note: "Advanced" button is the same as right click.

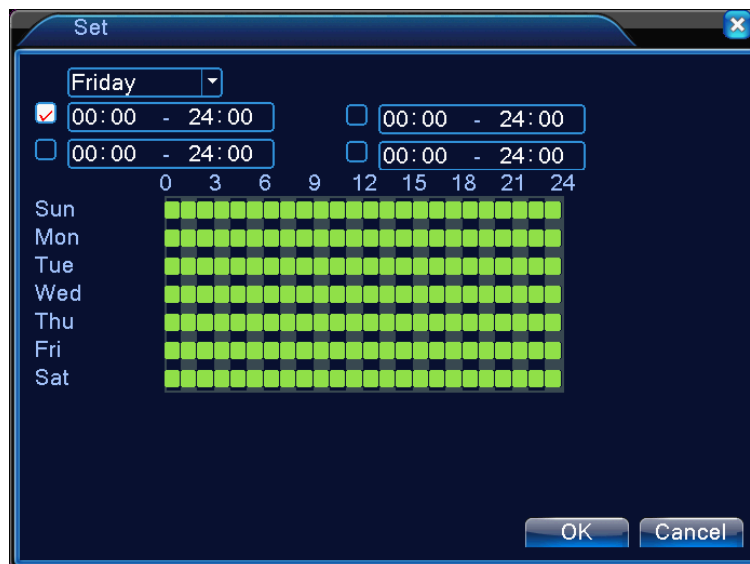


Pic 4.4 motion detect

【Channel】 Choose the set motion detect channel.

【Enable】 means that the motion detect function is on.

【Period】 Trigger the motion detect signal in the set time section. You can set according to week or set uniformly. Each day is divided into four time sections. means the set valid.



Pic 4.5 set the time section

【Interval】 Only one alarm signal is turned on even there are several motion detect signals in the set interval.

【Alarm output】 Start the external equipment of corresponding linkage alarm when the motion detect alarm is turned on.

【Delay】 Delay a few moments and stop when the alarm state is turned off. The range is 10~300 seconds.

【Record channel】 Choose the recording channel (multiple option supportive). Trigger the video signal when the alarm is turned on.

Note: Set in the [Record Conf] and perform the linkage recording. Start detecting video files in the corresponding time section.

【Tour】 means that the selective channel is single window alternate patrol preview. The interval is set in the [Main Menu]>[System] > [Tour].

【PTZ Activation】 Set the PTZ activation when the alarm is turned on.

Note: to link PTZ, need go [Shortcut menu]->[PTZ control] to set preset point, tour & interval time etc.



Pic 4.6 PTZ linkage

【Delay】 When alarm is over, recording will last some seconds(10~300sec), then stop.

【Show message】 Pop the alarm information dialog box in the local host computer screen.

【Send EMAIL】 ■ means sending an email to user when the alarm is turned on.

Note: Set in the [NetService] and send email.

【FTP upload】 to tick it, the video & picture of related record channel & snapshot channel will be uploaded to assigned position.

Note: FTP upload need be set at [Netservice]

【Buzz】 When alarm happens, device will come out with buzz.

4.3.2 Video Blind

When the video image is influenced by the environment such as bad brightness or reaching the set sensitivity parameter, the video blind function is turned on and the linkage function is turned on.

Note: Both of the NVR and the connected device need to enable video blind function, then it can work.

"Advanced" button is the same as right click.



Pic 4.7 video blind

Set method: refer to chapter 4.3.1. Motion detect.

4.3.3 Video Loss

When the equipment can not obtain the channel video signal, the video loss alarm is turned on and the linkage function is turned on.

Note:Both the NVR and the connected device need to enable this function ,then it can works.

"Advanced" button is the same as right click.



Pic 4.8 Video loss

Set method: refer to chapter 4.3.1. Motion detect

4.3.4 Abnormal

Analysing and inspecting current software and hardware of the device: When some abnormal events happen,the device will make a relative answer such as show message and buzzer.



Pic 4.10 Abnormal handing

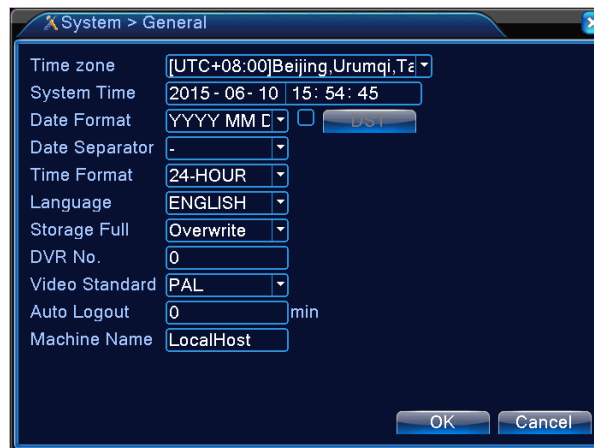
No Storage
Storage Device Error
Storage No Space
IP Conflict

- 【Event Type】 selecting abnormality you want to inspect
- 【Enable】 Select it to make sure abnormal function workable
- 【Show message】 Automatically alarm cue dialog box come out of the main screen
- 【Buzzer】 Device will have one long nosie “di” while alarm is happening

4.4 System setup

Set the system parameters such as: **General, Network, Net service, GUI display, PTZ configuration, RS485, RS232, Tour and digital.**

4.4.1 General



Pic 4.11 general setup

- 【System time】 Set the system data and time.
- 【Date format】 Choose the data format: YMD, MDY, DMY.
- 【Date Separator】 Choose list separator of the data format.
- 【Time Format】 Choose time format: 24-hour or 12-hour.
- 【Language】 Support 29 language at present: S- Chinese, T-Chinese, English, Farsi, Finnish, French, Greek, Hungarian, Italian, Japanese, German, Polish, Portuguese, Russian, Spanish, Thai, Turkish, Vietnamese, Romania, Brazil, Indonesia, Swedish, Arabic, Bulgarian, Czech, Hebrew, etc.
- 【HDD full】 Choose stop record: Stop recording when the hard disk is full.

Choose overwrite: Cover the earliest recording files and continue recording when the hard disk is full.

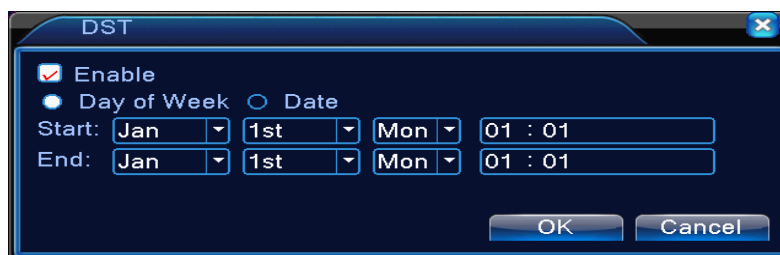
【DVR No.】 Only when the address button in the remote controller and the corresponding NVR number is matched, the remote operation is valid.

【Video Standard】 PAL or NTSC.

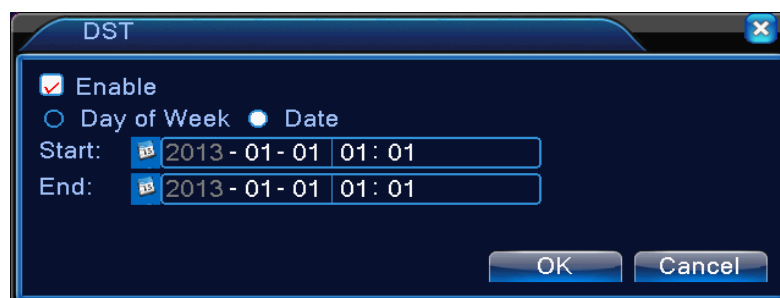
【Auto Logout】 Set the latency time in 0-60. 0 means no latency time.

【Machine Name】 Can setting the device's name.

【DST】 Choose the summer time option and pop the dialog box as followed.

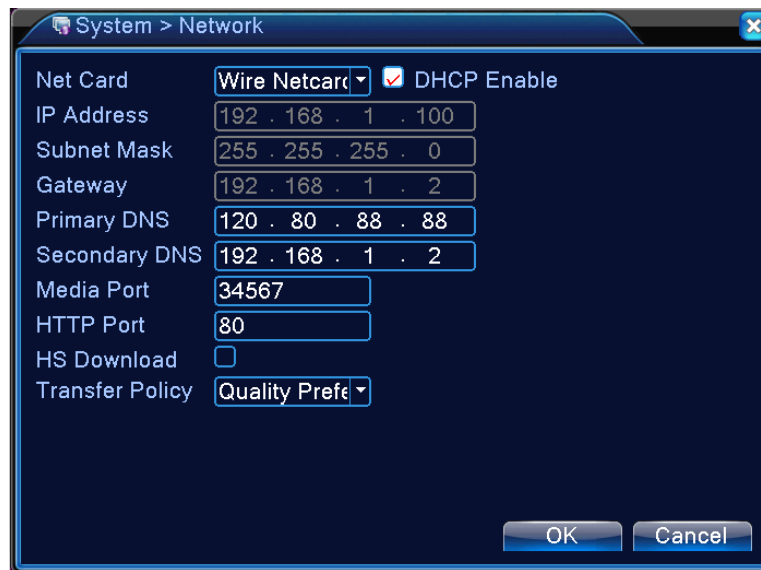


Pic 4.12 DST (week)



Pic 4.13 DST (date)

4.4.2 Network setup



Pic 4.14 Network setup

【Net Card】 You can choose cable network card or wireless network card.

【DHCP Enable】 Obtain IP address automatically(not suggested)

Note: DHCP server is pre-installed.

【IP address】 Set the IP address. Default: 192.168.1.10.

【Subnet mask】 Set the subnet mask code. Default: 255.255.255.0.

【Gateway】 Set the default gateway. Default: 192.168.1.1.

【DNS setup】 Domain Name Server. It translates the domain name into IP address. The IP address is offered by network provider. The address must be set and reboot then it works.

【Media port】 Default: 34567.

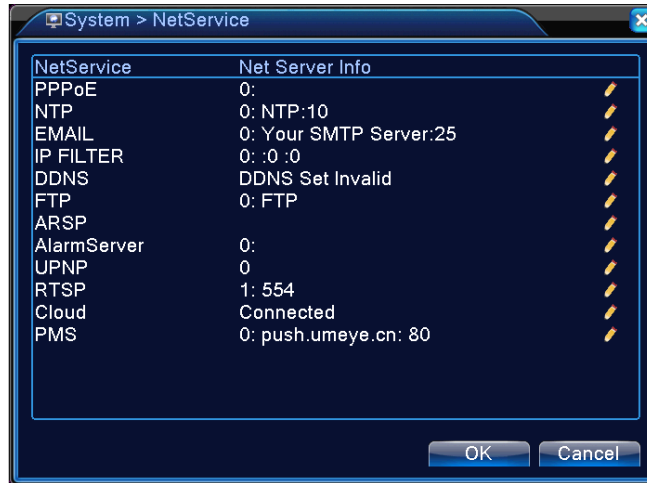
【HTTP port】 Default: 80.

【HS Download】

【Transfer Policy】 There are three strategies: self-adaption, image quality precedence and fluency precedence. The code stream will adjust according to the setup. Self-adaption is the tradeoff between the image quality precedence and fluency precedence. Fluency precedence and self-adaption are valid only when the assistant code stream is turned on. Otherwise image quality precedence is valid.

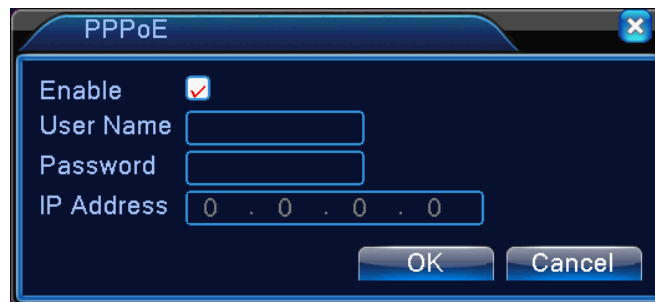
4.4.3 NetService

Choose the network service option and click the set button to configure the advanced network functions or double click the service button to configure the parameters



Pic 4.15 NetService

【PPPoE setup】



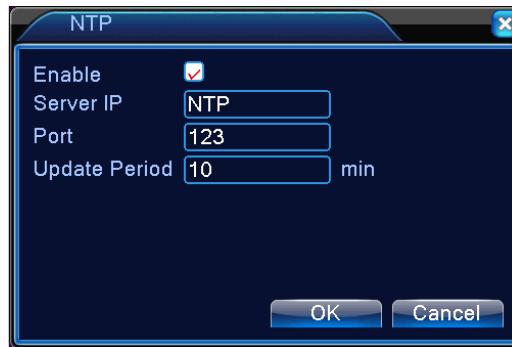
Pic 4.16 PPPOE

Enable: Reverse ■ means choose, setting can become effective.

Input the user name and password that ISP (Internet service provider) provides. After saving it reboot up your system. Then the NVR will build a network connection based on PPPoE. The IP address will change into dynamic IP address after above operation is well done.

Operation: After PPPoE dialing successfully look up the IP address in the [IP address] and obtain the current IP address. Then use this IP address to visit the NVR through user port.

【NTP setup】



Pic 4.17 NTP setup

The NTP server must be installed in the PC.

Enable: Reverse mean choose, setting can become effective.

Host computer IP: Input the IP address installed NTP server.

Port: Default: 123. You can set the port according to NTP server.

Update Period: The same with the NTP server check interval. Default: 10minutes.

【EMAIL setup】

If the alarm is turned on or the alarm linkage photos are taken, send an email about the alarm information and the photos to appointed address.



Pic 4.18 EMAIL setup

SMTP server: Email server address. It could be an IP address or domain name. Domain name can be translated only it is the correct DNS configuration.

Port: Email server port number.

SSL: Decide whether using Secure Socket Layer protocol to login.

User Name: Apply the email server user name.

Password: Input the password corresponding to the user.

Sender: Set the email sender address.

Receiver: Send the email to appointed receivers when the alarm is turned on. You can set three receivers at most.

Title: You can set as you wish.

【IP Filter setup】

When choosing the white list, only the listed IP address can connect the NVR. The 64 IP addresses are supportive in the list.

When choosing the black list, the listed IP address can not connect the NVR. The 64 IP addresses are supportive in the list.

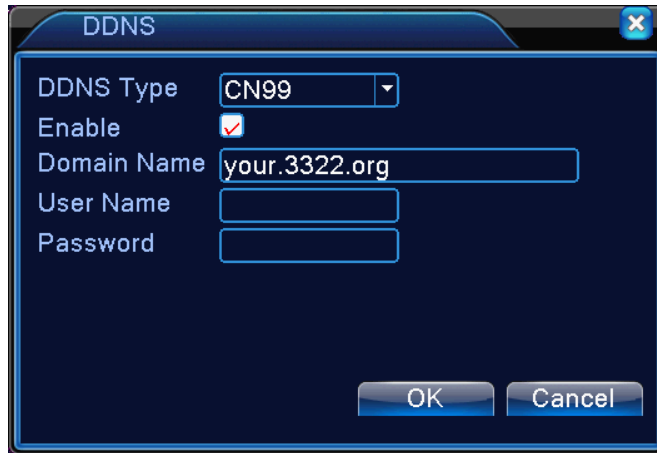
You can delete the set IP address by $\sqrt{\quad}$ in the options.

Note: When the same IP address is in the white and black list at the same time, the black list precedence is higher.



Pic 4.19 IP filter setup

【DDNS】



Pic 4.20 DDNS setup

It is the abbreviation of dynamic domain name server.

Local domain name: Provide the domain name registered by DDNS.

User name: Provide the account registered by DDNS.

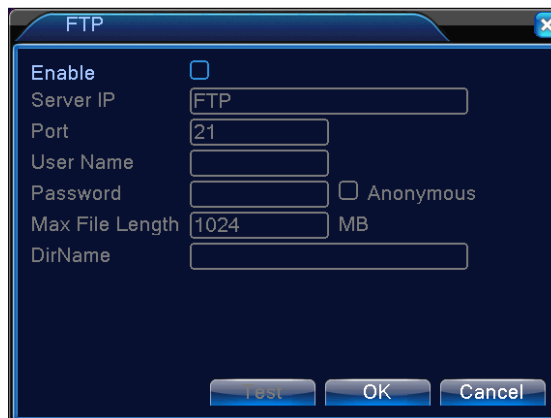
Password: Provide the password registered by DDNS.

When the DDNS is successfully configured and start, you can connect the domain name in the IE address column to visit.

Note: The DNS setup must be configured correctly in the network setup.

【FTP setup】

FTP is available only when alarm happens,or alarm activates record and snapshot,it will upload related record and snapshot pictures to FTP server.



Pic 4.21 FTP setup

【Enable】 Click Enable,then all settings will be available

【Server IP】 IP address for FTP server

【Port】 Domain Port of FTP,default 21

【User Name】 User name of FTP

【Password】 Password of user

【Anonymous】: enable anonymous,no need setting user name and password

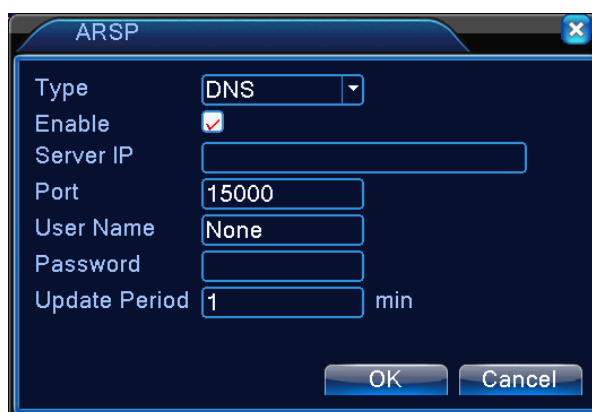
【Max File Length】 Max length for upload files at every packed,default 128M

【Dir Name】: The directory of upload file.

Note: The user should be with authority to upload files.

【ARSP】

Startup DDNS server to add devices and manage it in the DDNS server



Pic 4.22 ARSP setup

【Type】 choose "DNS"

【Enable】 means it is chosen

【Sever IP】 IP address of DDNS server

【Port】 : Port No. of device, related DDNS server listen port

【User name】 the user name that device can log in DDNS server

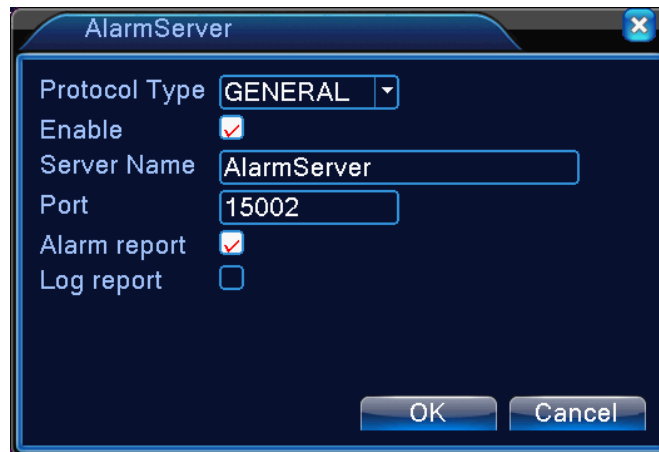
【Password】 the password related to the user name.

【Refresh cycle】 Time interval between device and DDNS when chynchronously.

Note: Please set up server before using DDNS.

【Alarm center】

When alarm occurring, report alarm information to alarm server.



Pic 4.23 Alarm center setup

【Protocol type】 GENERAL

【Enable】 To tick it means enable.

【Server IP】 IP address of Alarm Server

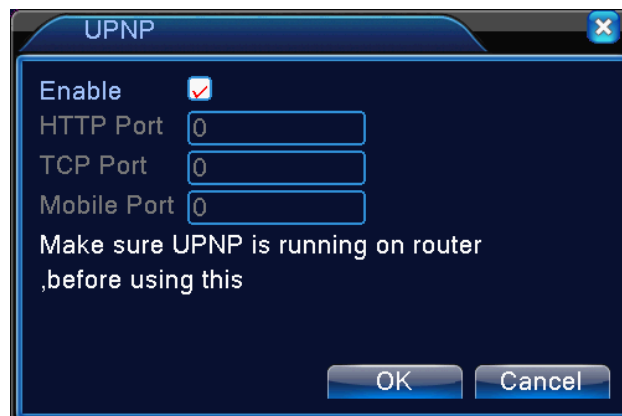
【Port】 Device Port No.

【Alarm Report】 Tick it means to report alarm information to server.

【Log Report】 Tick it, means to report log to server.

【UPNP】

UPNP protocol is to realize auto port forwarding on router, precondition of using this function is to make sure the UPNP function of router is enabled.



Pic 4.26 UPNP setup

【Enable】 Choose Enable to make sure all UPNP settings available

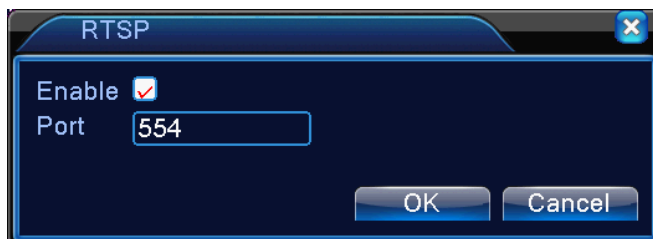
【HTTP】 Route will automatically distribute HTTP port for the device,when IE viewing,it need this port

【TCP】 Router will automatically distribute TCP port for the device,when monitoring via CMS,it need this port.

【Mobile Port】 Router will automatically distribute Mobile Port for the device,when mobile monitor,it need this port.

【RTSP】

To do surveillance via cross-browser (Safari, Firefox, Google chrome) and VLC software. **This function only for monitor but can not control the device.**



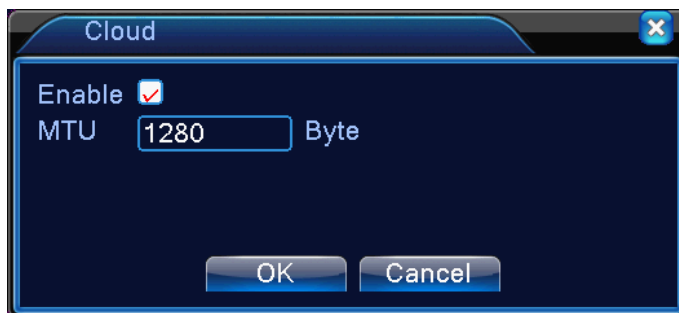
Pic 4.28 RTSP setup

【Enable】: ■ means enable, tick it firstly before setting.

【Port】: the default port is 554

【Cloud】

【Enable】 ■ means enable cloud function,the user can enter <http://xmeye.net> to login device by serial number.



Pic 4.29 cloud

4.4.4 GUI Display

Configure the parameters of video output signal.

In the local preview mode include:time display, channel title, record status, alarm status,deflick, transparency and region cover.



Pic 4.30 GUI display

【Time Display】 Display the system data and time in the surveillance window.

【Channel title】 Display the system channel number in the surveillance window.

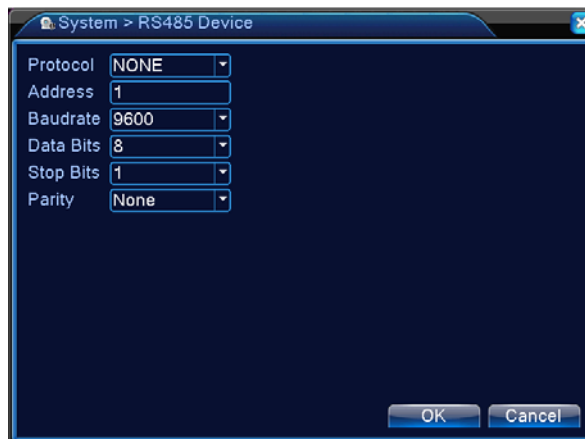
【Record Status】 Don't support.

【Alarm Status】 Display the system alarm status in the surveillance window.

【Transparency】 Choose the background image transparency. The range is 128~255.

【Resolution】 set display resolution.

4.4.5 RS485



4.31 R485

【Protocol】 choose related protocol of brand model(for example: DaHua);

【Address】 set with corresponding address, default is 1;

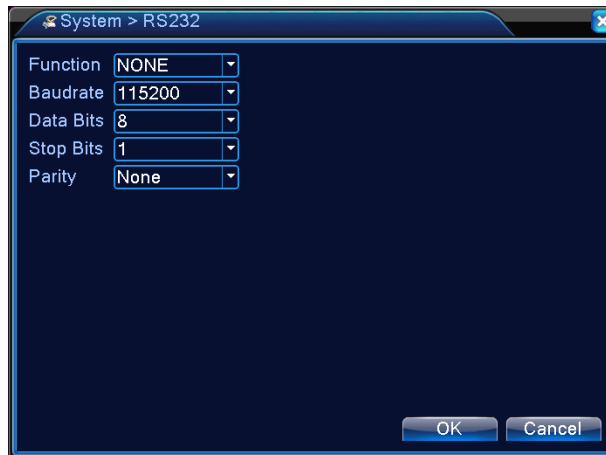
【Baud rate】 choose bard rate that related device use, default is 115200;

【Data bits】 including 5-8 options, default is 8;

【Stop bits】 including 2 options, default is 1;

【Parity】 Include odd check, even check, sign check, blank check. Default: void.

4.4.6 RS232



Pic 4.32 RS232 setup

【Serial Port Function】 Common serial port is used to debug and update program or set up specific serial port.

【Baud rate】 Choose the corresponding baud rate length.

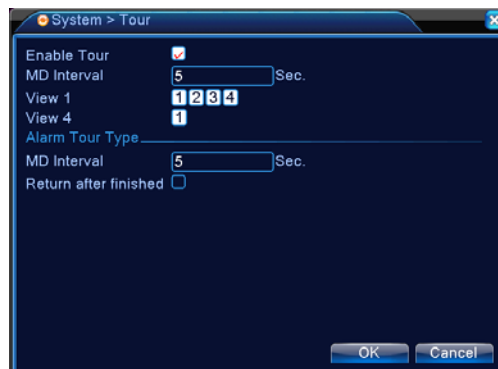
【Data bits】 Include 5-8 options.

【Stop bits】 Include 2 options.

【Parity】 Include odd, even, mark, space, default is none.

4.4.7 Tour

Set the tour display. ■ means that the tour mode is enable. You can choose the single-view, four-view, nine-view ,sixteen -view of single mode tour or hybrid mode tour.



Pic 4.33 tour setup

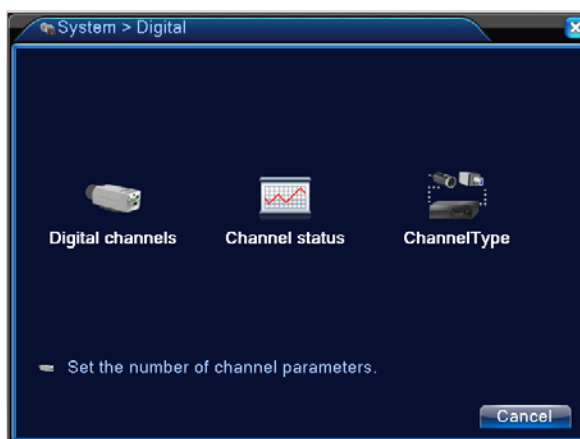
【Interval】 Set the tour switch interval time. The range is 5-120 seconds.

【Alarm tour】 set the interval time to shift alarm tour, range is 5-120 seconds, choose return when alarm ends, when alarm link to tour, system will auto shift to six-view after alarm finished.

Note: at preview mode, click upper right icon  /  can turn on / off tour ( mean turn on,  mean turn off) .

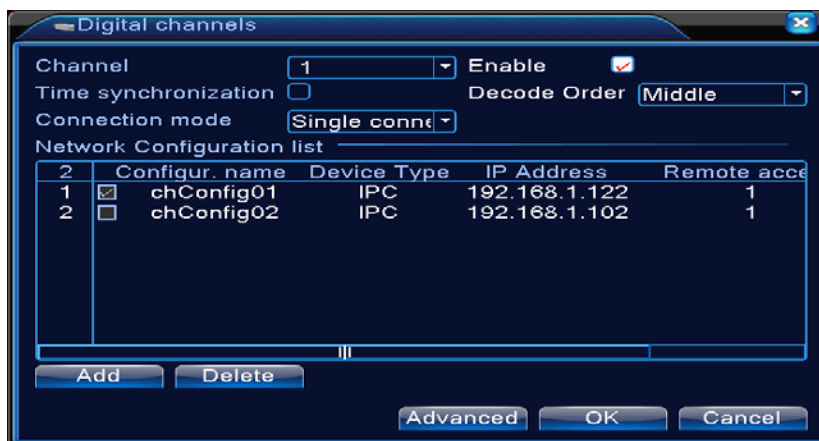
4.4.8 Channel manage

Digital manage including digital channel, channel status, and channel mode

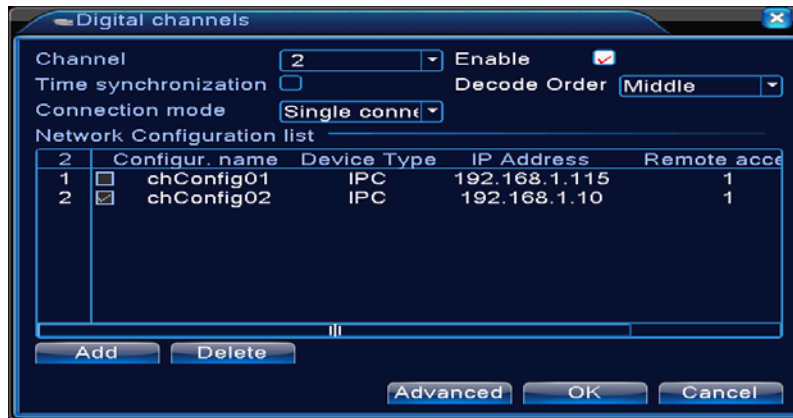


Pic 4.34 channel manage interface

Digital channel:



Single link page of digital channel



Multi-linkage page of Digital channel

Pic 4.35 digital channel interface

【Channel】 select channel number.

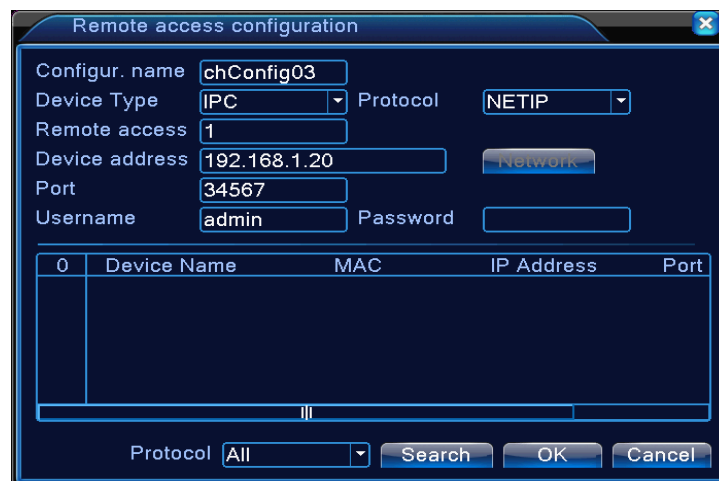
【Enable】 Open digital channel, tick enable, then can do related settings

【Time Synchronization】 Tick it means the time of this channel and device is the same.

【Connection Mode】 can be single connect or multi-link, multi-link modes can connect to several devices, device will be tour displayed one by one, tour interval can be set, no less then 10s;

【Delete】 If the user want to change device, select the existing device, click delete will be ok.

【Add】 click add will come out below page to add new device



Pic 4.36 remote channel configure page

【Configure Name】 device is with default configure name, user can revise it if necessary;

【Device Type】 3 types: IPC、 DVR、 HVR, user can choose as what you like, default is IPC;

【Protocol】 Default is NETIP,can choose ONVIF.

【Remote channel】 User can input remote channel title from the device that you want to connect remotely

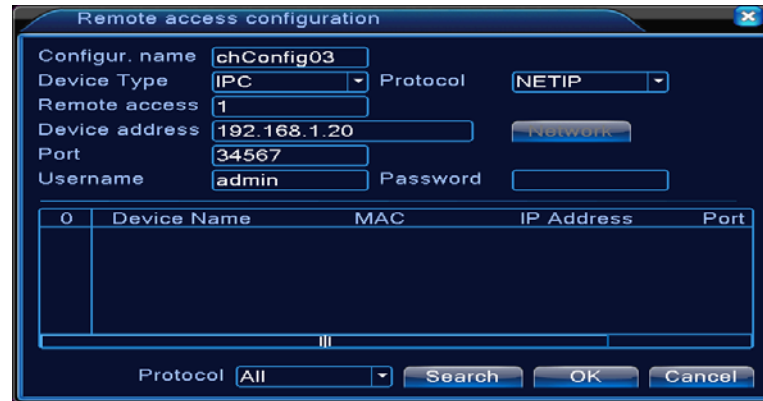
【Stream】 Default is main stream, do not support extra-stream at present;

【Device address】 IP address of device.

【Port】 Default is 34567

【User name】 Default is admin

Note:Click 【search】 will show all the devices in the lan.

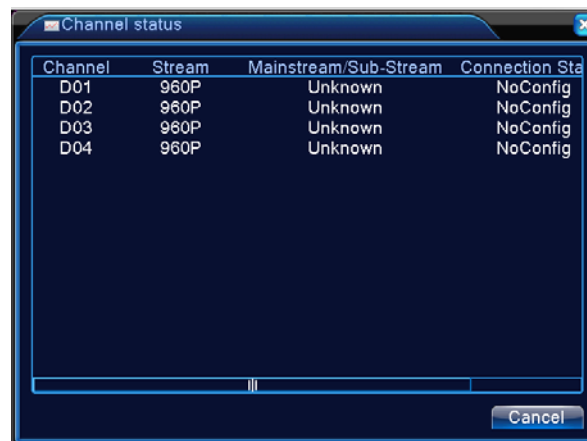


Pic 4.37 the device list searched under remote channel setting

Channel Status:

Channel status is to show the status of all the digital channel When there is what existing, status Including Max Resolution, this Resolution, Connection Status.

See as follow picture:



When a channel is added with device but it is not enable, you will see as below:

Channel	Stream	Mainstream/Sub-Stream	Connection Sta
D01	D1	Unknown	NoConfig
D02	D1	Unknown	NoConfig
D03	D1	Unknown	NoConfig
D04	D1	Unknown	NoConfig
D05	D1	Unknown	NoConfig
D06	D1	Unknown	NoConfig
D07	D1	Unknown	NoConfig
D08	D1	Unknown	NoConfig

Note:

when under multi-screen,display extra stream's resolution,when under single screen,display main stream's resolution.

when the current resolution is over the max resolution that the channel supported, then a red "X" will be shown on the preview image, for example: Under full digital channel mode, Max resolution of channel 3 is D1, if it was connected to a device with resolution over D1 (such as 960H), you will see below pic:



Channel mode:

IP	
<input type="checkbox"/>	960P 4
<input checked="" type="checkbox"/>	D1 8

Playback channel: 4
Maximum number of preview: 4

Note:different model have different channel mode, user can shift the mode freely if necessary.

4.5 Advanced

Manage tools menu including: HDD Manage,Account,Online User, Output Adjust, Auto Maintain, Restore,Upgrade,Device Info,Import/Export.

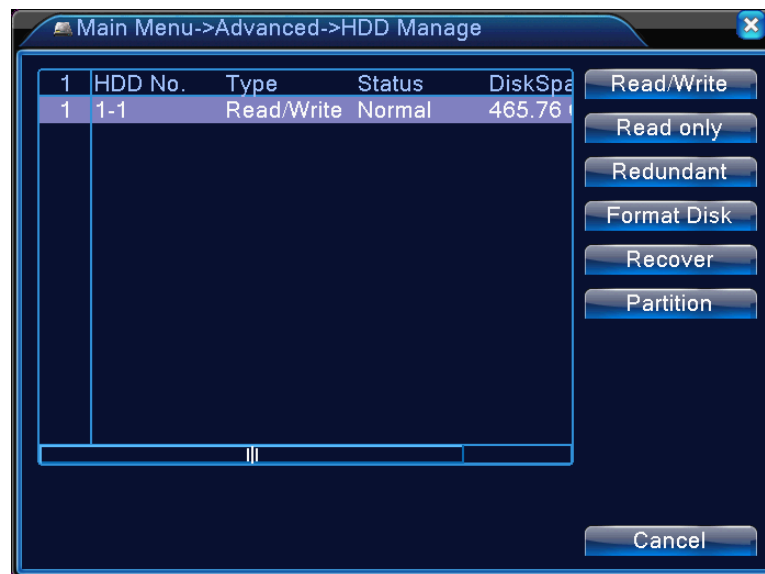
4.5.1 HDD Manage

Configure and manage the hard disk. The menu displays current hard disk information: hard disk number, input port, type, status and overall capability. The operation include: setup the write-read disk,snapshot,read-only disk, redundant disk,format disk,recover disk,partition.Choose the hard disk and click the right function button to execute.

Note: Read/Write Disk: The equipment can write or read data.

Read-only Disk: The equipment can read data but can not write data.

Redundant Disk: Double backup the video files in the write-read disk.



Pic 4.38 HDD manage

4.5.2 Account

Manage the user purview.

Note:1. The character length is 8 bytes at most for the following user and user team name. The blank ahead or behind the character string is invalid.The middle blank in the character string is valid.

Legal characters include: letter, number, underline, subtraction sign, dot.

2. There is no limit in the user and user group. You can add or delete the user group according to

user definition. The factory setup include: user\admin. You can set the team as you wish. The user can appoint the purview in the group.

3. The user management include: group/ user. The group and user name can not be the same. Each user only belongs to one group.



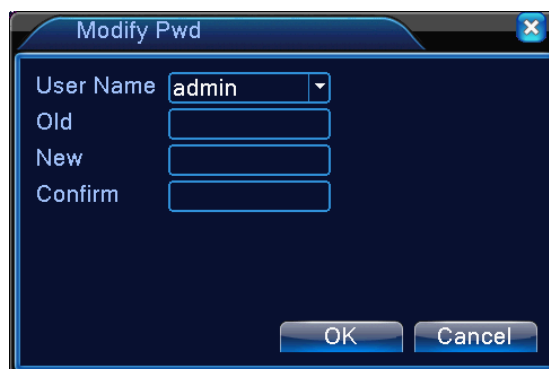
Pic 4.39 Account

【Modify User】 Modify the existed user attribute.

【Modify Group】 Modify the existed team attribute.

【Modify Password】 Modify the user password. You can set 1-6 bit password. The blank ahead or behind the char string is invalid. The middle blank in the char string is valid.

Note: The user who possess the user control purview can modify his/her own or other users password

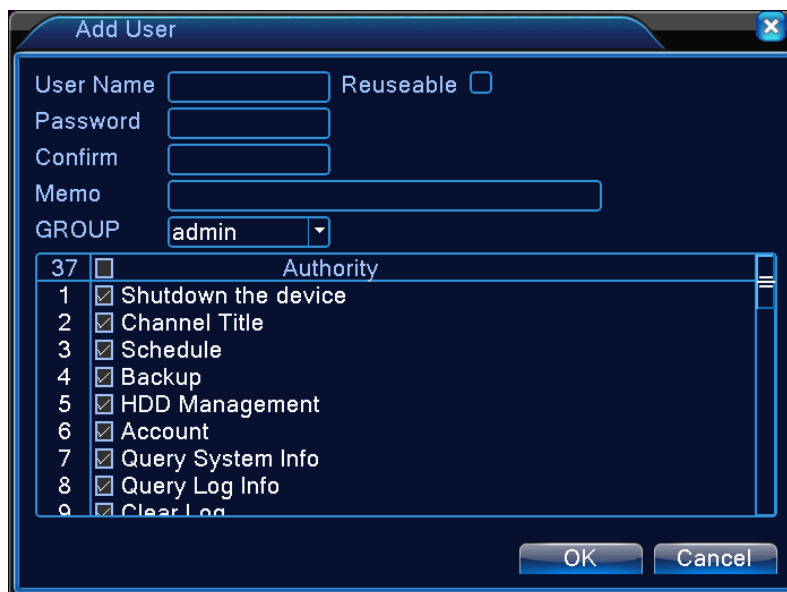


Pic 4.40 modify password

【Add user】 Add a user in the group and set the user purview. Enter the menu interface and input the user name and password. Choose the team and choose whether cover using the user. Cover using means that the account can be used by multiple users at the same time.

Once choose the team the user purview is the subclass of the team.

We recommend that the common user's purview is lower than the advanced user.



Pic 4.41 add user

【Add Group】 Add a user group and set the purview. There are 33 different purviews: shut down the equipment, real time surveillance, playback, record setting, video backup and so on.



Pic 4.42 add group

【Delete User】 Delete the current user. Choose the user and click delete user button.

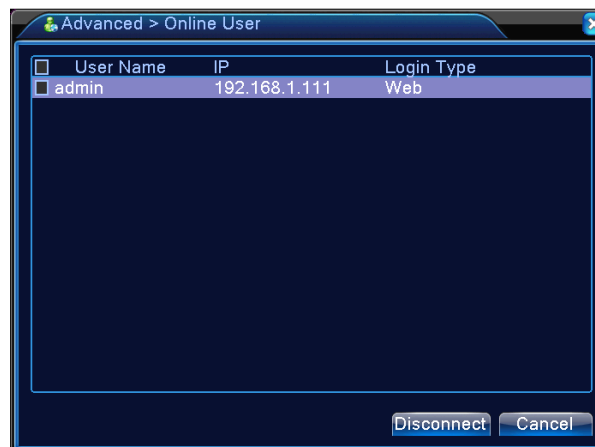
【Delete Group】 Delete the current group. Choose the group and click delete group button.



Pic 4.43 delete group

4.5.3 Online user

To check the information of network user that connected with local device, also can tick the selected user to break up connection, (make \surd at the box), then the user will be frozen after connection stopped, and will not log in until device reboot.



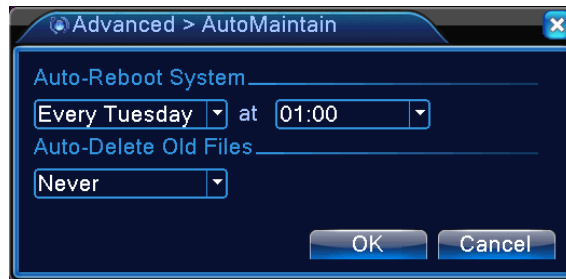
Pic 4.44 online user

4.5.4 Output adjust

Refer to chapter 3.5.7 .

4.5.5 Auto Maintain

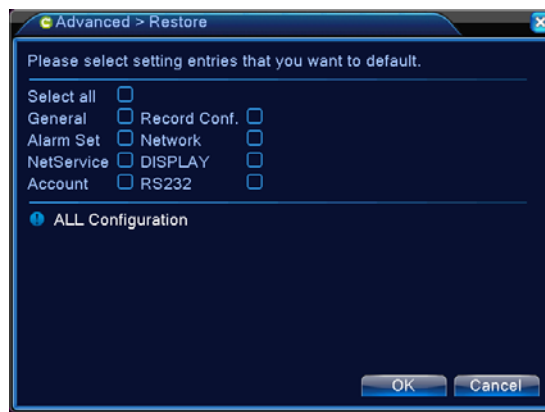
The user can set the time to auto reboot and auto delete file.



Pic 4.45 auto maintain

4.5.6 Restore

The system restore to the default . You can choose the items according to the menu.



Pic 4.46 restore

4.5.7 Upgrade



Pic 4.47 upgrade

【Upgrade】 choose USB interface.

【Upgrade file】 choose the upgrade file.

4.5.8 Device Info

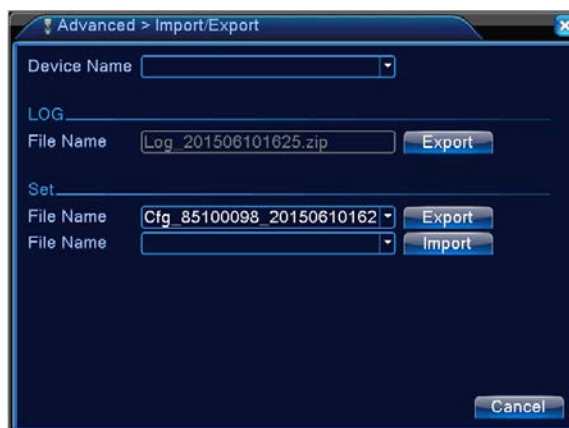
Provide device interface info like audio in,alarm in/out to be conveniently used for user.



Pic 4.48 device info

4.5.9 Import / Export

Users can export the log info and the configure file from device to connected flash stick, and also can import related configure file from flash stick to settings, which greatly bring convenience to the customers.



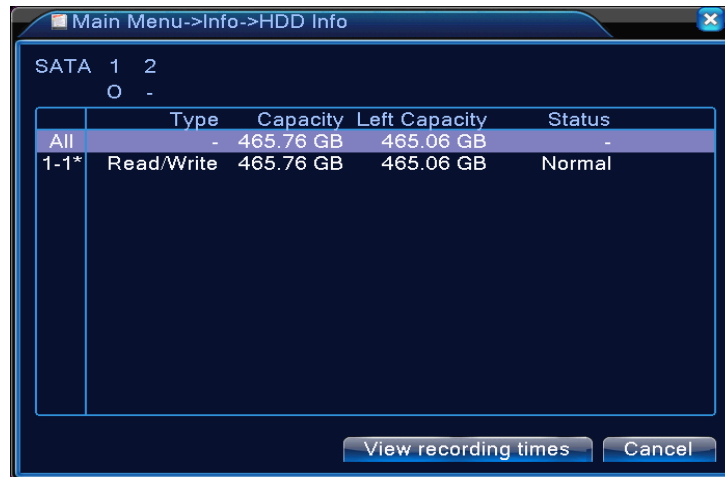
Pic 4.49 import/export interface

4.6 Info

Display the hard disk information, including HDD info, BPS, log, version info.

4.6.1 HDD info

Display the hard disk state: hard disk type, overall capability, residual capability, the recording time and so on.



Pic 4.50 HDD Info

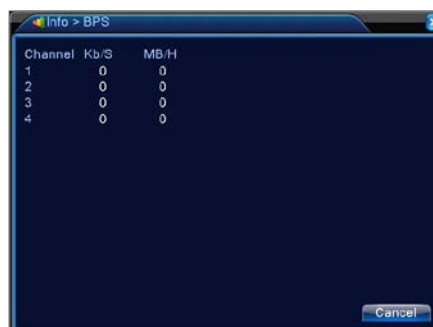
Tips: ○ means that the hard disk is normal. X means that the hard disk is broken-down.- means that there is no hard disk. If the user need to change the damaged hard disk, you must shut down the NVR and take up all the damaged hard disks,then install a new one.

* behind serial number means the current working disk such as 1*. If the corresponding disk is damaged, the information will show “? ”.

Different NVR model can connect different amount of HDD.

4.6.2 BPS

Display the code stream (Kb/S) and hard disk capability (MB/H) in real time. It displays as the wave sketch map.



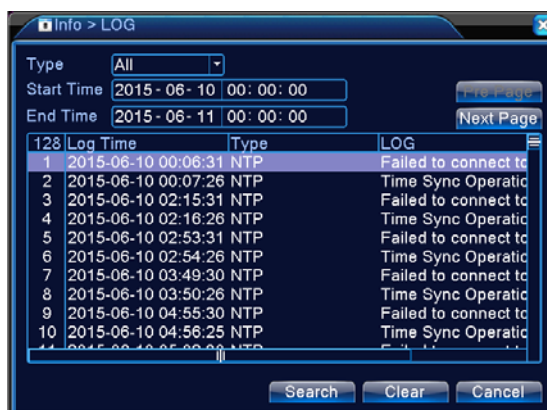
Pic 4.51 BPS

4.6.3 Log

To search log information base on the set search mode.

Log information include: system operation, configuration operation, data management, alarm affair,

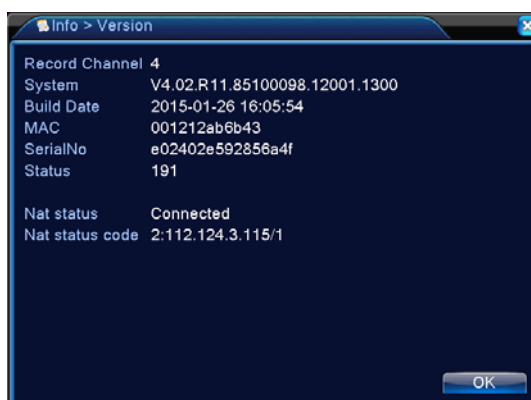
recording operation, account management, file management and so on. Set the time section to look up and click the look up button. The log information will display as a list. (one page is 128 items) Press **Page up** or **Page down** button to look up and press **delete** button to clear all the log information.



Pic 4.52 log

4.6.4 Version

Display the basic information such as hardware information, software version, issue date, serial number , NAT status and so on.



Pic 4.53 version info

4.7 Shut down system

Refer to chapter 3.5.8.

5 Cloud Technology Basic Operation

5.1 Cloud technology monitor

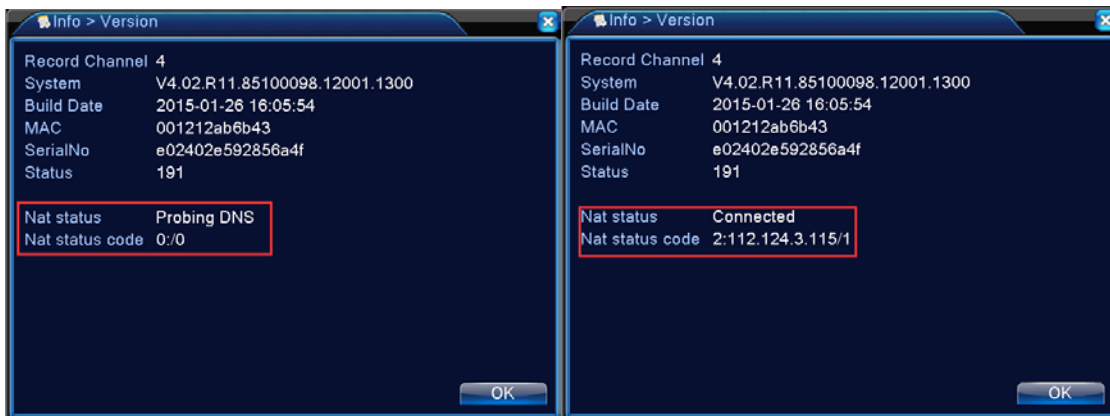
Cloud technology make the device one step on net, greatly bring convenience for customer to

monitor via wide area network, this technology is using the serial no to visit device.

***Remark: the device that using cloud technology should be in the WAN(Wide Area Network)firstly.**

➤ **Check the connecting status of cloud technology**

Connect device to WAN firstly, then enter **【Main menu】 > 【Info】 > 【Version】** to check whether the device successfully connect to the cloud server or not.



Connect failed interface

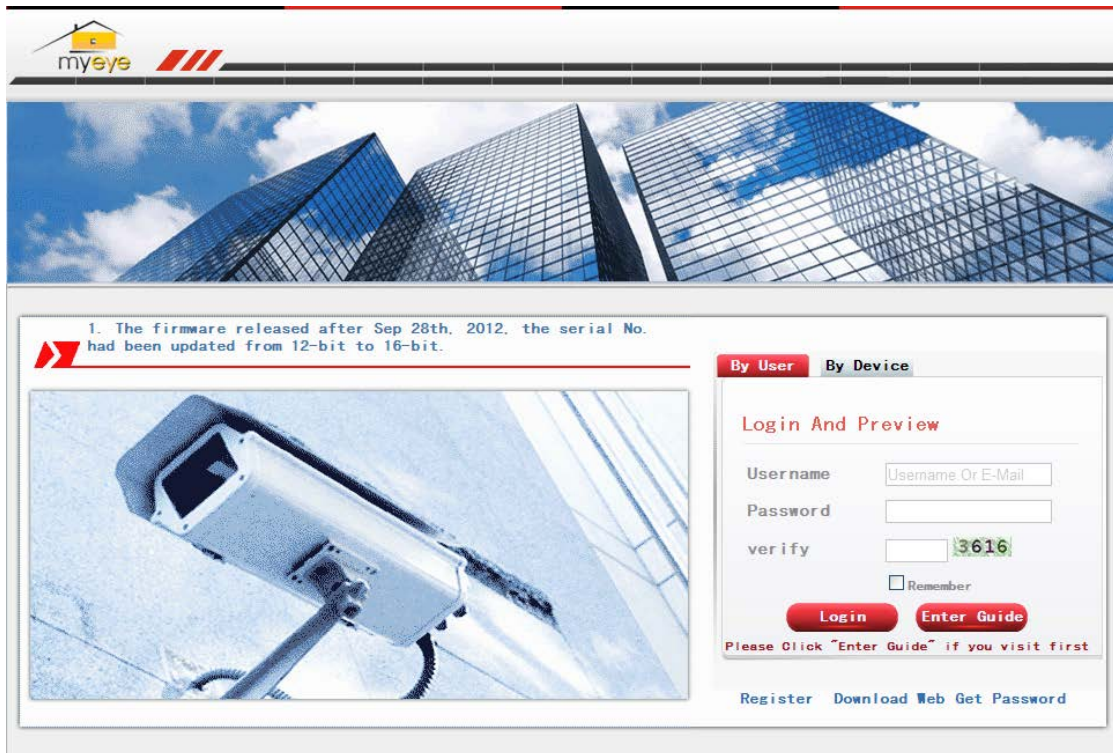
successfully connect interface

Pic 5.1 cloud technology server connection status

➤ **Log in cloud server**

Enter <http://xmeye.net> to see below log in page, it divided into two mode: **by user** and **by device**, user can base on their need to log in freely.

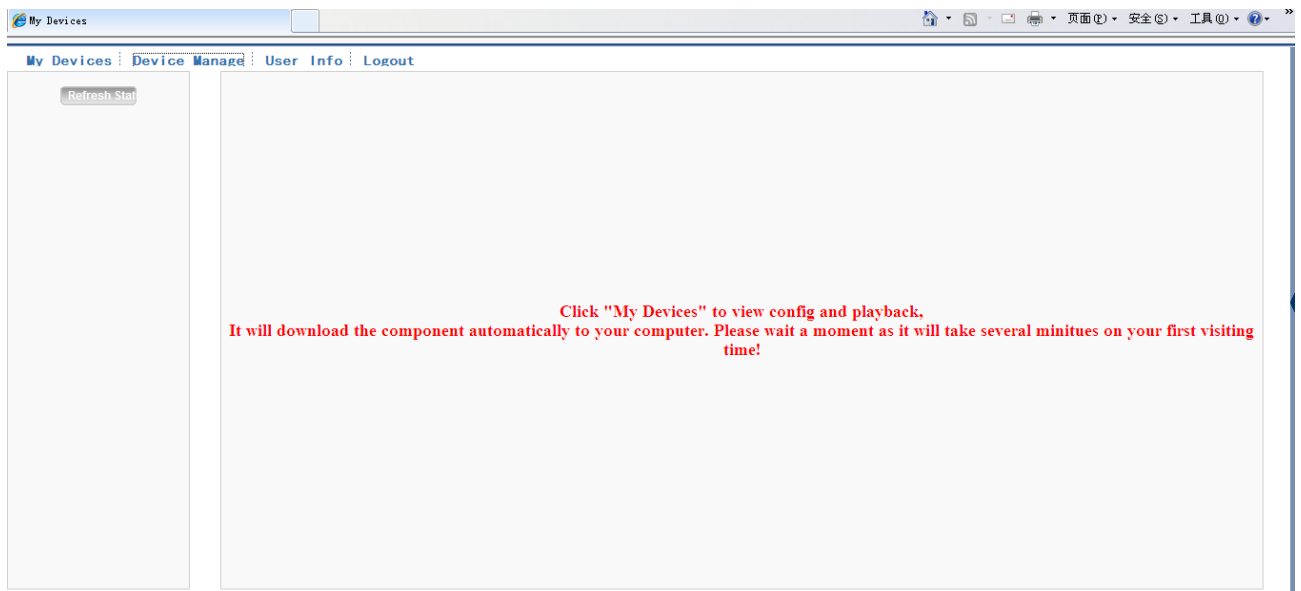
***Note: to log in “by user”, the user need to register at the first time.**



Pic 5.2 Cloud login interface

➤ **Log in by user**

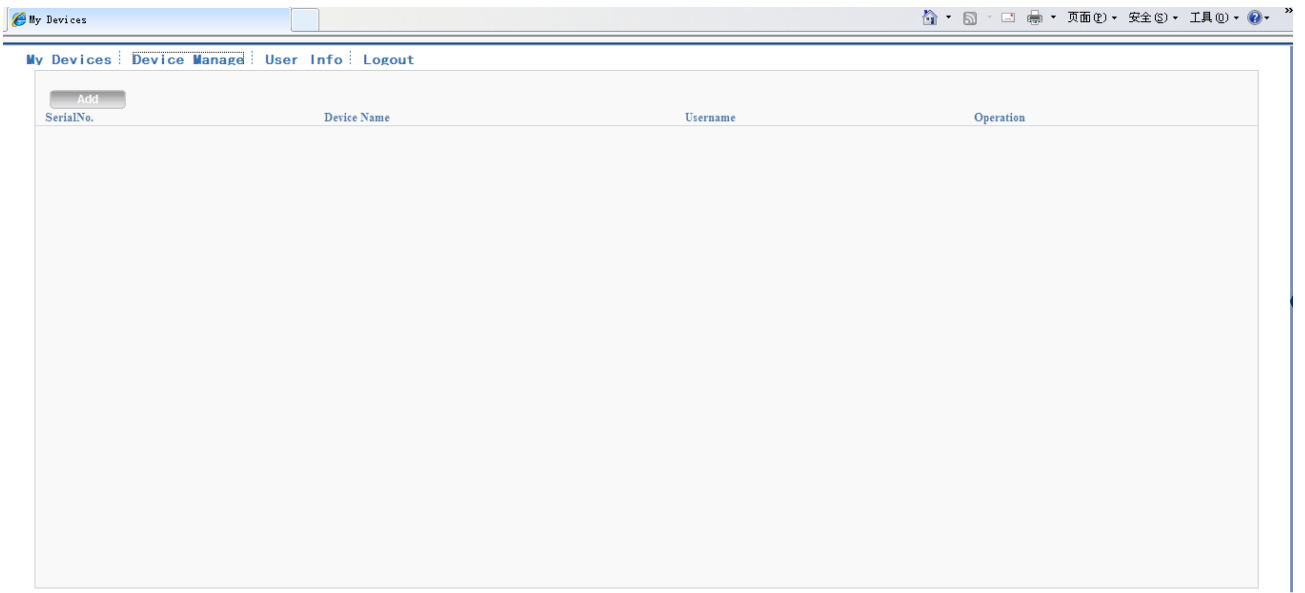
Customer use their registered user name and password to log in, will see below interface.



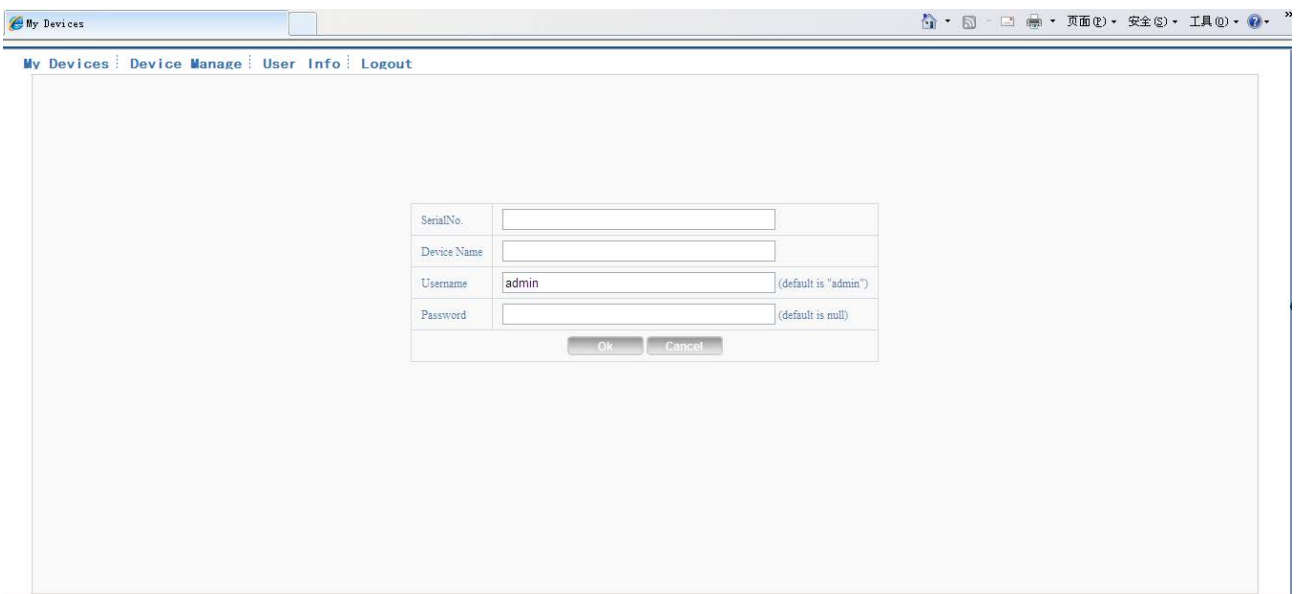
Pic 5.3 cloud technology operation interface

Device manage:

Mainly use to add device, click "add"to add the serial number of device to be monitored.



Pic 5.4 device manage interface

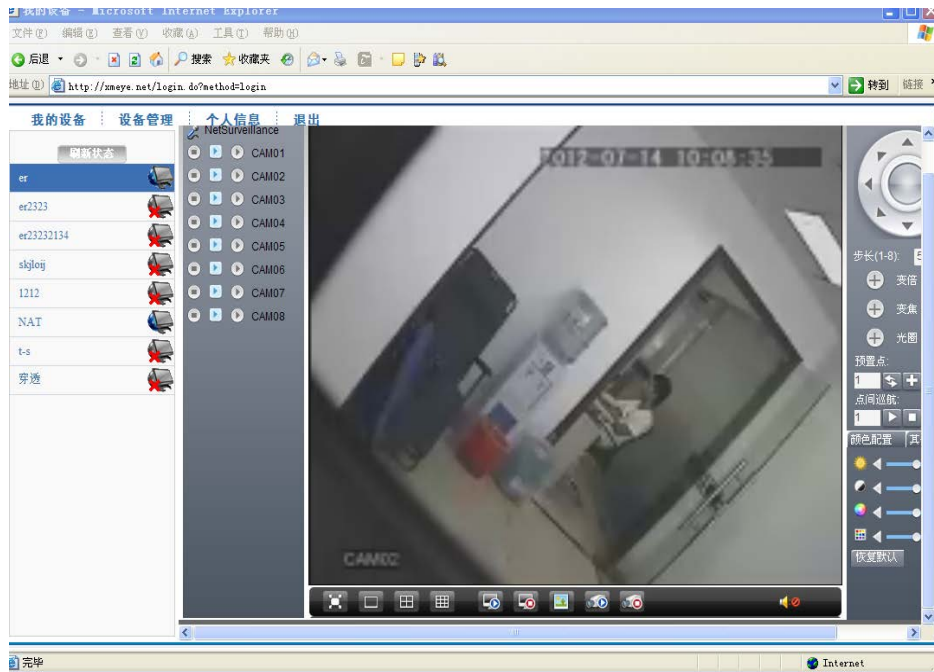


Pic 5.5 add interface at device manage

Note:in pic 5.5, the user name means the user name of monitored device, password means the password of related user.

My Device

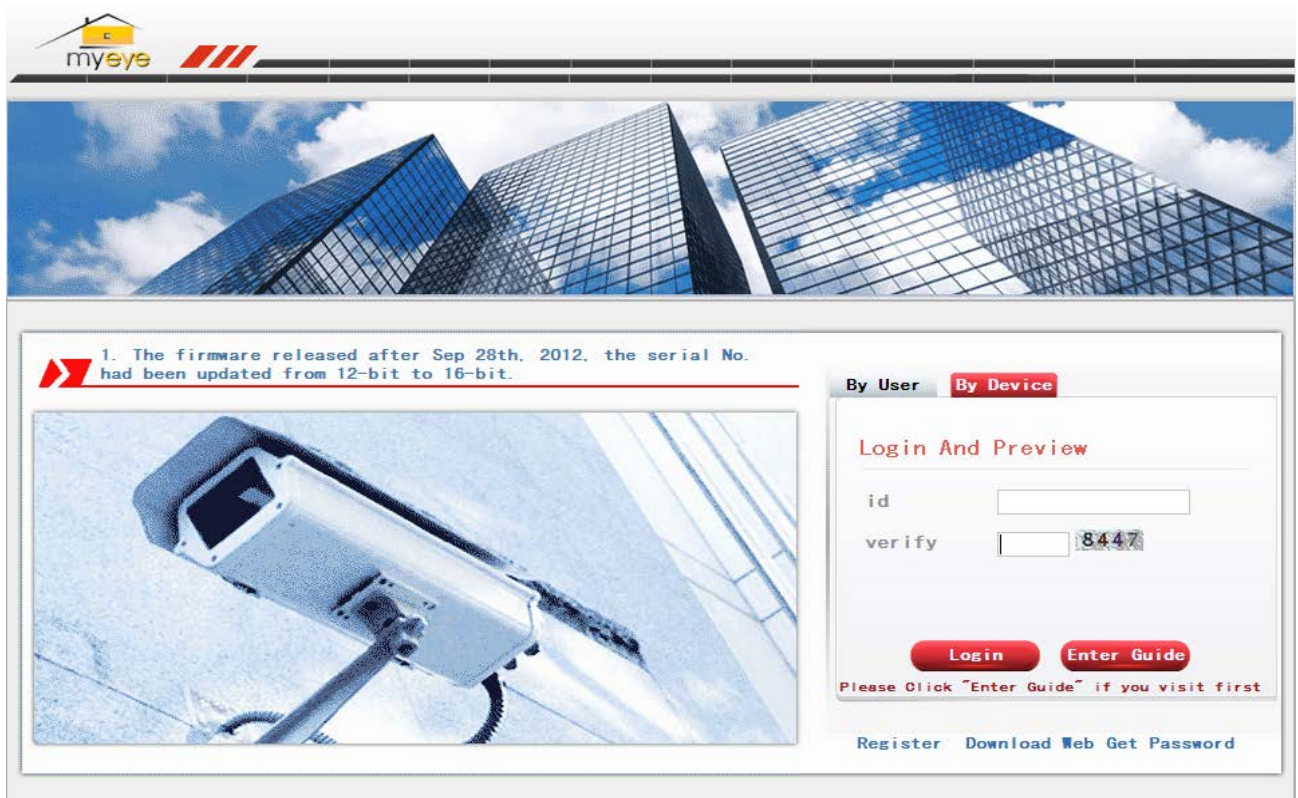
Mainly show all the added device here, click the on-line device name, can access to control this device accordingly.



Pic 5.6 monitor page - log in by user

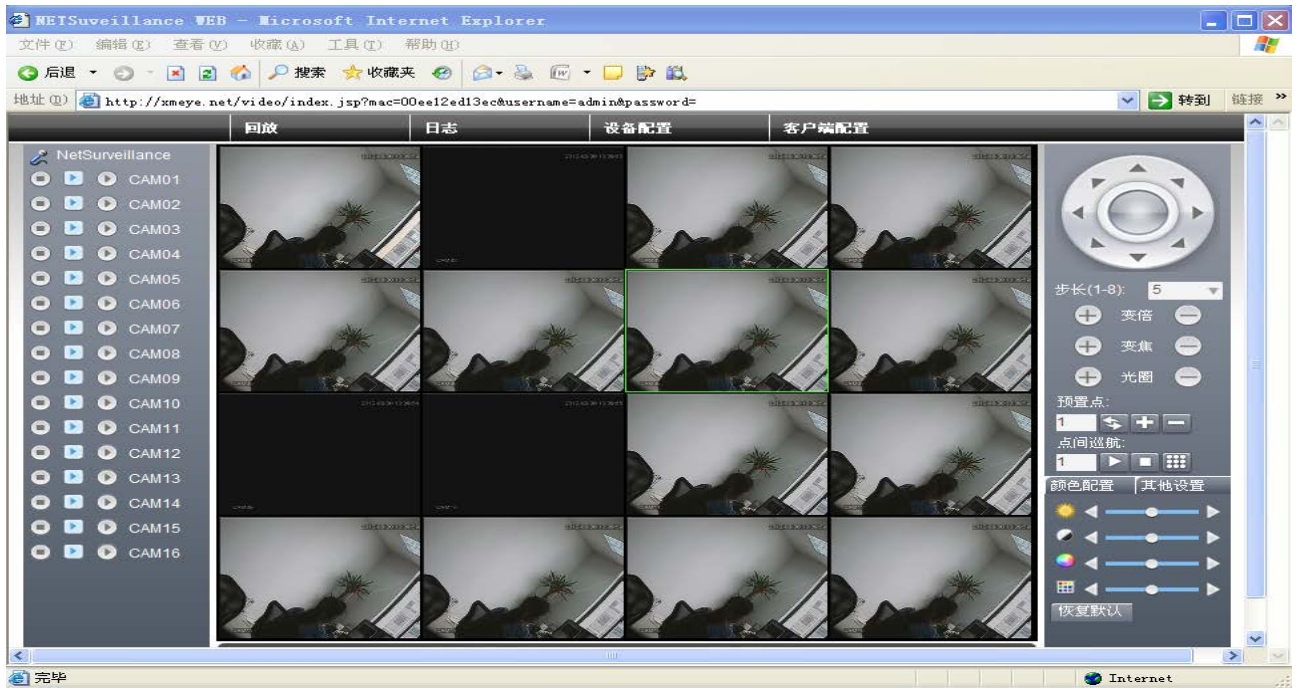
Note: the icon of “**X**” means offline, the device do not connect to server successfully.

➤ **Log in by device**



Pic 5.7 interface of log in by device

Input the serial number of device and the verify code to monitor and control the device directly.



Pic: 5.8 monitor page - log in by device

6 FAQ and maintenance

6.1 FAQ

If the problems are not listed, please contact the local service or call the HQ service. We are willing to offer the service.

1、 **The NVR can not boot up normally.**

Possible reasons are as followed:

- 1 The power supply is not correct.
- 2 Switch power supply line is not in good connection.
- 3 Switch power supply is damaged.
- 4 The program updating is wrong.
- 5 The hard disk is damaged or the hard disk lines are broken.
- 6 The front panel is damaged.
- 7 The main board of the NVR is damaged.

2、 **The NVR reboots automatically or stops working after boot up a few minutes.**

Possible reasons are as followed:

- 1 The input voltage is not stable or too low.
- 2 The hard disk is damaged or the hard disk lines are broken.
- 3 The power of the switch power supply is low.
- 4 Frontal video signal is not stable.
- 5 Bad heat radiator or too much dust or bad running circumstance for the NVR.
- 6 The hardware of the NVR is damaged.

3、 **System can not detect hard disk.**

Possible reasons are as followed:

- 1 The hard disk power supply line is not connected.
- 2 The cables of the hard disk are damaged.
- 3 The hard disk is damaged.
- 4 The SATA port of main board is damaged.

4、 There are no video outputs in single channel, multiple channels and all channels.

Possible reasons are as followed:

- 1 The program is not matched. Please update the program.
- 2 The image brightness is all 0. Please restore the default setup.
- 3 There is no video input signal or the signal is too weak.
- 4 The channel protection or the screen protection is set.
- 5 The hardware of the NVR is damaged.

5、 I can not find the video files in local playback mode.

Possible reasons are as followed:

- 1 The data line of the hard disk is damaged.
- 2 The hard disk is damaged.
- 3 Update the different program with the origin program files.
- 4 The video files to look up are covered.
- 5 The recording is not on.

6、 The local video is not clear.

Possible reasons are as followed:

- 1 The image quality is too bad.
- 2 The reading program is wrong. Reboot up the NVR.
- 3 The data line of the hard disk is damaged.
- 4 The hard disk is damaged.
- 5 The hardware of the NVR is damaged.

7、 There is no audio signal in the surveillance window.

Possible reasons are as followed:

- 1 It is not an active tone arm.
- 2 It is not an active sound box.
- 3 The audio lines are damaged.
- 4 The hardware of the NVR is damaged.

8、 There is audio signal in the surveillance window but no audio signal in the playback state.

Possible reasons are as followed:

- 1 Setting issues: the audio option is not chosen.
- 2 The according channel is not connected with the video.

9、 The time is wrong.

Possible reasons are as followed:

- 1 Setting is wrong..
- 2 The battery is in bad connection or the voltage is too low.
- 3 The oscillation is damaged.

10、 The NVR can not control the PTZ.

Possible reasons are as followed:

- 1 There is something wrong with the frontal PTZ.
- 2 The setting, connection or the installation of the PTZ decoder is not correct.
- 3 The connections are not correct.
- 4 The PTZ setting of the NVR is not correct.
- 5 The protocols of the PTZ decoder and the NVR are not matched.
- 6 The address of the PTZ decoder and the NVR are not matched.
- 7 When multiple decoders are connected, the far port of the PTZ decoder line A(B) must connect a 120Ω resistance to reduce the reflection otherwise the PTZ control is not stable.
- 8 The distance is too far.

11、 The motion detect is not working,

Possible reasons are as followed:

- 1 The time range set is not correct.
- 2 The motion detect area set is not correct.
- 3 The sensitivity is too low.
- 4 Limited by some hardware edition.

12、 I can not login via web or CMS.

Possible reasons are as followed:

- 1 The system is windows 98 or win me. We recommend updating to windows 2000sp4 or higher Version or installing the software for low edition.
- 2 ActiveX is hold back.

- 3 The version is not exceeded dx8.1. Update the display card driver.
- 4 Network connection failure.
- 5 Network setting issues.
- 6 Invalid password or user name.
- 7 The CMS is not matched the NVR program version.

13、 The image is not clear or there is no image in network preview state or video file playback state.

Possible reasons are as followed:

- 1 Network is not stable.
- 2 The user machine is resource limited.
- 3 Choose the play-in-team mode in the network setup of NVR.
- 4 The region shelter or channel protection is set.
- 5 The user has no surveillance purview.
- 6 The real-time image of the hard disk recording machine itself is not clear.

14、 Network connection is not stable.

Possible reasons are as followed:

- 1 Network is not stable.
- 2 IP address is conflicted.
- 3 MAC address is conflicted.
- 4 The net card of the NVR is bad.

15、 There is something wrong with the USB backup or writing a CD.

Possible reasons are as followed:

- 1 The rewritable machine and the hard disk are shared the same data lines.
- 2 The data is too much. Please stop recording and backup.
- 3 The data exceeds the backup storage.
- 4 The backup equipment is not compatible.
- 5 The backup equipment is damaged.

16、 The keyboard can not control the NVR.

Possible reasons are as followed:

- 1 The serial port of the NVR is not set correctly.

- 2 The address is not correct.
- 3 When multiple transformers are connected, the power supply is not large enough. Please give each transformer individual power supply.
- 4 The distance is too far.

17、 Alarm can not be recessional.

Possible reasons are as followed:

- 1 The setting of the alarm is not correct.
- 2 The alarm output is turned on manually.
- 3 The input machine is damaged or the connections are not correct.
- 4 There are some problems for specific program edition, Please update the program.

18、 Alarm is not working.

Possible reasons are as followed:

- 1 The setting of the alarm is not correct.
- 2 The connection of the alarm is not correct.
- 3 The alarm input signal is not correct.
- 4 A alarm is connected with two loops synchronously.

19、 The remote controller is not working,

Possible reasons are as followed:

- 1 The remote control address is not correct.
- 2 The remote control distance is too far or the angle is too large.
- 3 The battery is used up.
- 4 The remote controller or the front panel of the recording machine is damaged.

20、 The storage time is not enough.

Possible reasons are as followed:

- 1 Front vidicon quality is bad. The lens is too dirty. The vidicon is in backlighting installation.
- 2 The hard disk capability is not enough.
- 3 The hard disk is damaged.

21、 The downloading files can not play.

Possible reasons are as followed:

- 1 There is no media player.

- 2 There is no DX8.1 software or higher edition.
- 3 There is no DivX503Bundle.exe file to play AVI video files.
- 4 The DivX503Bundle.exe and ffdshow-2004 1012 .exe files must be installed in the windows xp system.

22、 I can not remember the advanced password or network code in the local menu operation.

Please contact the local service or call the HQ service. We will offer the service according the machine type and the program edition.

23、 Can not see the preview picture the digital channel

Possible reasons are as followed:

- 1 Did not add device
- 2 The device of related channel was not enable
- 3 The device of related channel was not selected.
- 4 The selected device did not connect to video sources
- 5 The channel title of selected remote device is not exist.
- 6 Stream for remote channel was set by extra stream.
- 7 User name & password not matched
- 8 directly input with IP address or port No. incorrectly when adding device.
9. The resolution of added device is too large to display by the monitor.

24、 Click “search” why not search out any of the device.

Possible reasons are as followed:

- 1 There is no other device exist in the Local area network
- 2 The subnet mask setting incorrectly on Network settings.

25、 The time shows on digital channel is not the same as local side:

Enable the time synchronous function of digital channel.

26、 Picture will be frozen when multi-connection and shift devices.

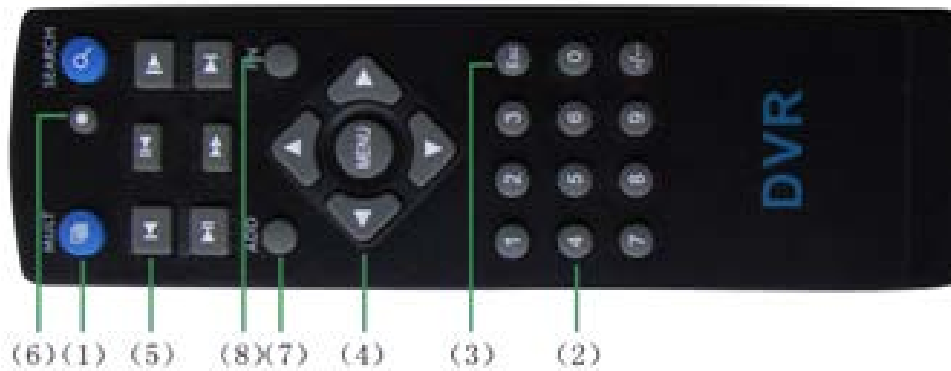
Picture come out from digital channel need few seconds, shift device means to show new picture, so it needs several seconds to buffer.

6.2 Maintenance

- 1 Please brush printed circuit boards, connectors, fans, machine box and so on regularly.
- 2 Please keep the grounding well done to prevent the video or audio signal interfered and the NVR from static or inductive electricity.
- 3 Do not pull out the video signal line or RS-232 port or RS-485 port with the power on.
- 4 Do not use the TV in the local video output port(VOUT) of NVR. It will damage the video output circuit easily.
- 5 Do not turn off the switch directly. Please use the turn-off function in the menu or press the turn-off button in the panel (3 seconds or longer) to protect the hard disk.
- 6 Please keep the NVR away from heat resource.
- 7 Please keep the NVR ventilated for better heat radiator.

Please check the system and maintain regularly.

Appendix 1.Remote controller operation



Serial number	Name	Function
1	Multi-window button	Same function as Multi-window button in the front panel
2	Numeric button	Code input/number input/channel switch
3	【Esc】	Same function as 【Esc】 button in the front panel
4	Direction button	Same function as direction button in the front panel
5	Record control	Control the record
6	Record mode	Same function as “Record mode”
7	ADD	Input the number of NVR to control it
8	FN	Assistant function

Appendix 2. Mouse operation

***Take right hand as an example**

The mouse in USB connection is supported.

Operation	Function
Double left click	Double click one item in the file list to playback the video Double click the playback video to zoom in or out the screen
	Double click the channel to make it full screen display double click again to resume the multi-window display
Left click	Choose the according function in the menu
Right click	Pop desktop shortcut menu in preview state
	Current shortcut menu in the menu
Press middle button	Add or subtract number in the number setting
	Switch the items in the combo box
	Page up or down in the list
Move mouse	Choose the widget or move the item in the widget
Drag mouse	Set the motion detect area
	Set the cover area

Appendix 3.Hard disk capability calculation

Make sure the hard disk installed to the NVR for the first time. Pay attention to the IDE hard disk lines connection.

1、 Hard disk capability

There is no limit for recording machine. We recommend 120G~250G size to keep better stability.

2、 Overall capability option

The hard disk capability formula is:

Overall capability (M) =channel number*time (hour) *capability in an hour (M/hour)

The recording time formula is:

$$\text{Recording time (hour)} = \frac{\text{overall capability (M)}}{\text{Capability in an hour (M/hour) *channel number}}$$

The NVR introduces the H.264 compression technology. Its dynamic range is very large so the hard disk capability calculation is based on the estimation values of each channel creating files in an hour.

Example:

For one piece 500G HDD,real time CIF for recording,it will keep recording for about 25 days.HDD spaces per channel is 200M/H,if 4channels real time CIF at 24hours recording uninterrupted,it can last:500G/(200M/H*24H*4ch)=26 days

EVOLVEO

Detective D04

User's installation and operation Manual

www.evolveo.com

