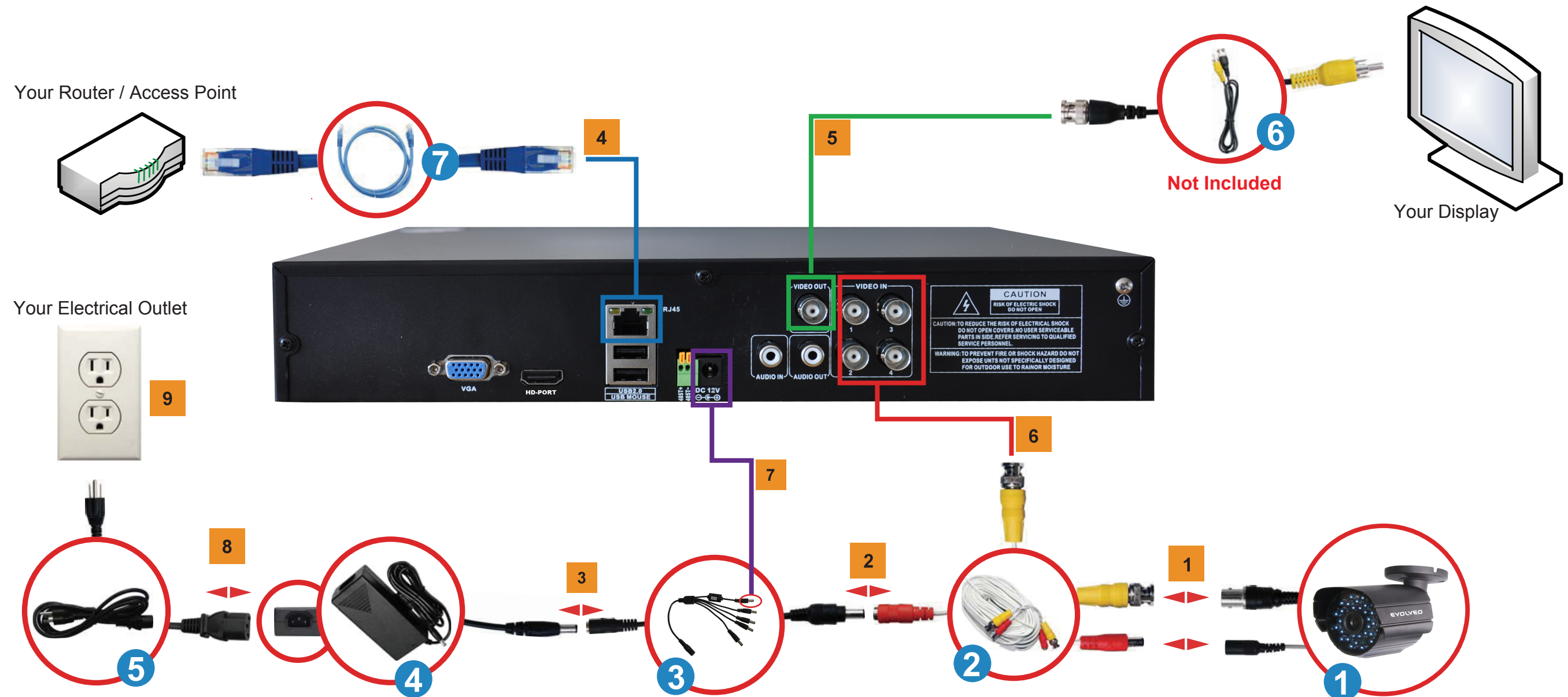


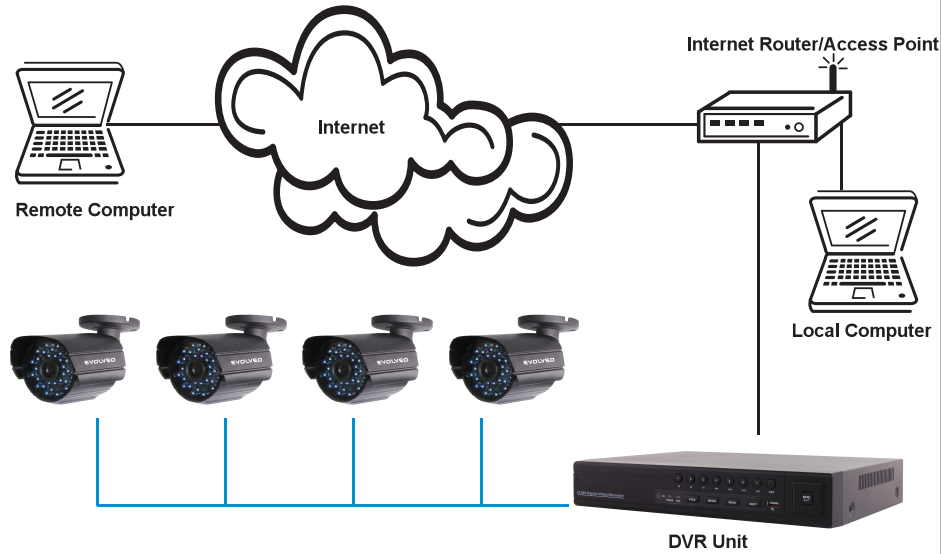
1. Instalace



Instruction:

- 1 Connect the BNC Connector and the Power Connector of the CCTV Camera(s) 1 with Camera Cables 2.
- 2 Using the 5 way Splitter Cable 3, connect the male end of the Power Connector to the Camera Cables' Female End of the Power Connector (indicated in RED). 2
- 3 Connect the single end of the 5 Way Splitter cable 3 to the Power Connector of the Adapter 4.
- 4 If connecting to the Internet, then connect one end of the Ethernet Cable 7 to the LAN port of the DVR unit and the other end of the Ethernet Cable 7 your Router / Access Point
- 5 Take the BNC Connector end of the BNC to RCA Cable 6 and connect to any of the two Video Output port of the DVR unit. Take the RCA Connector end of the BNC to RCA Cable 6 and connect to the Video In RCA port of the Display you will be using.
- 6 Given that one end of the Camera Cable 2 is already connected to the CCTV Camera, take the unconnected BNC connector and link it to one of the four BNC input Channel (1CH, 2CH, 3CH, 4CH)
- 7 Use the Male End of the DVR Power Adapter 3 connect to the DVR DC Power Input Jack
- 8 Connect the Power Cable 5 to the Power Adapter 4
- 9 Plug the Power Cable 5 into an Electrical Outlet

2. Simple Network Diagram

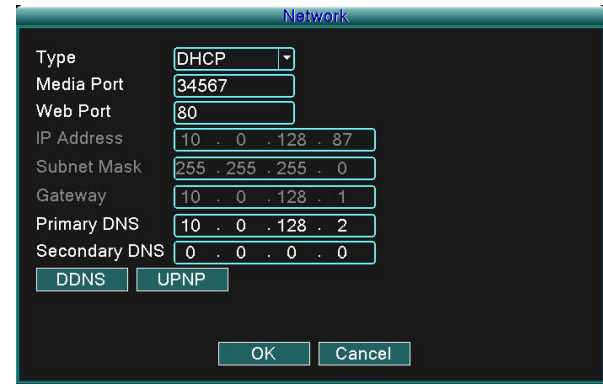


3. Remote View Setup Instruction:

1

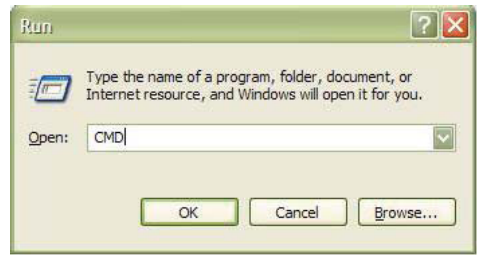


From the DVR Main Menu, Select Network Setup



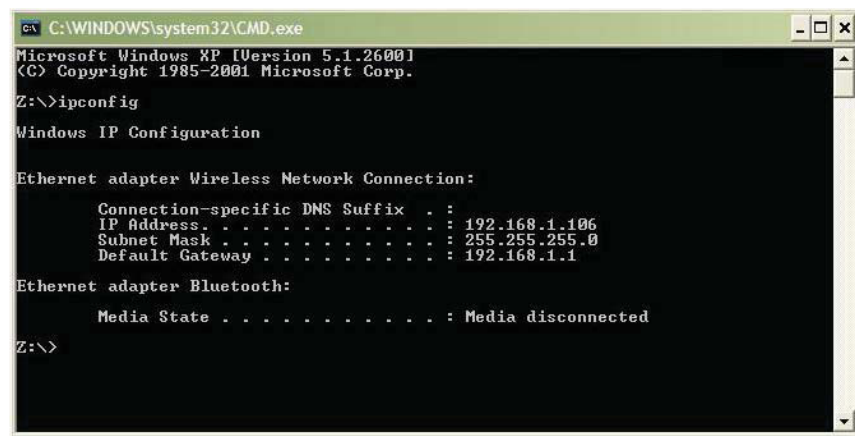
Determine the IP address shown. This is your DVR's IP address. Make a note of this.

2



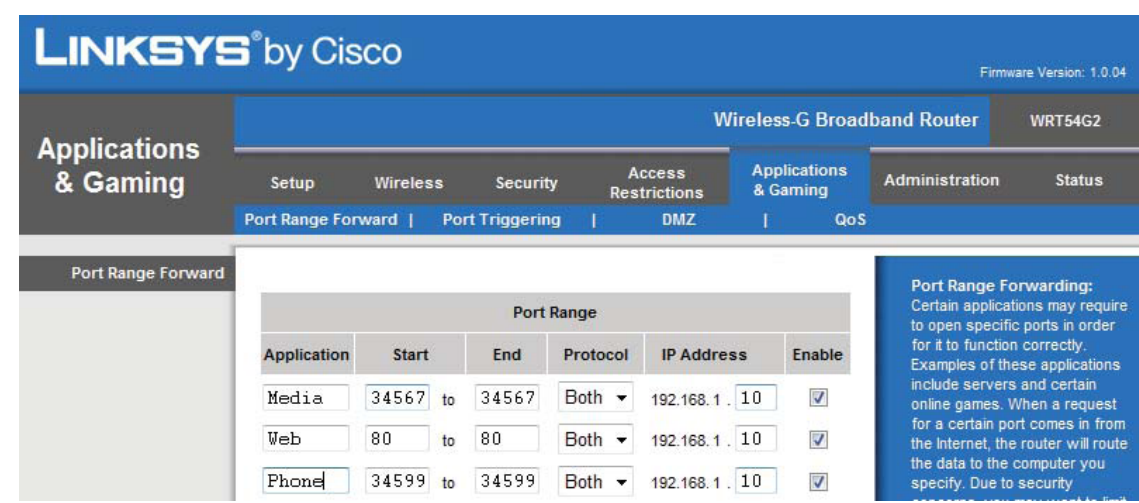
Using a PC that is connected to the same Router / Access Point as the DVR unit, bring up a Command Prompt by clicking the Start Button - Run. In the Run window, Type in CMD and click OK.

3



In the Command Prompt window, type in the following command:
ipconfig
A list of numbers are generated. Identify where the Default Gateway is and note the IP Address (i.e. 192.168.1.1). This is your **ROUTER/ ACCESS POINT IP ADDRESS**.
*(The above illustration is only an example.)

4



Open up Internet Explorer and access the Router Setup Page by using the IP address you have discovered on Step 3 ,

Refer to the User's Manual of your Router/Access Point and access the Router Setup Page. You may also visit <http://www.portforward.com> to search for the model of your Router/Access Point on how to set up Port Forwarding. Once you gain access to the Router Setup Page, navigate to the section which allows you to configure port forwarding. You must forward media port 34567, web port 80, phone port 34599 to the IP address of your DVR unit.

4. Frequently Asked Questions (FAQ)

- Q1: Why there is no image showing on my monitor/TV after I turn on the DVR?
A1: Check all camera's input cable and make sure they are secured properly. Also make sure all the power connectors are tightly connected.
- Q2: System cannot detect hard disk.
A2: Possible reasons:
1). The hard disk power supply line is not connected.
2). The cables of the hard disk are damaged.
3). The hard disk is damaged.
4). The SATA port of main board is damaged.
- Q3: I cannot login via web or CMS software.
A3: Possible reasons:
1). ActiveX is disabled.
2). The version is not higher than dx8.1. Update the display card driver.
3). Network connection failure.
4). Network settings are incorrect.
5). Invalid password or user name.
6). The CMS software does not match the DVR program version.