

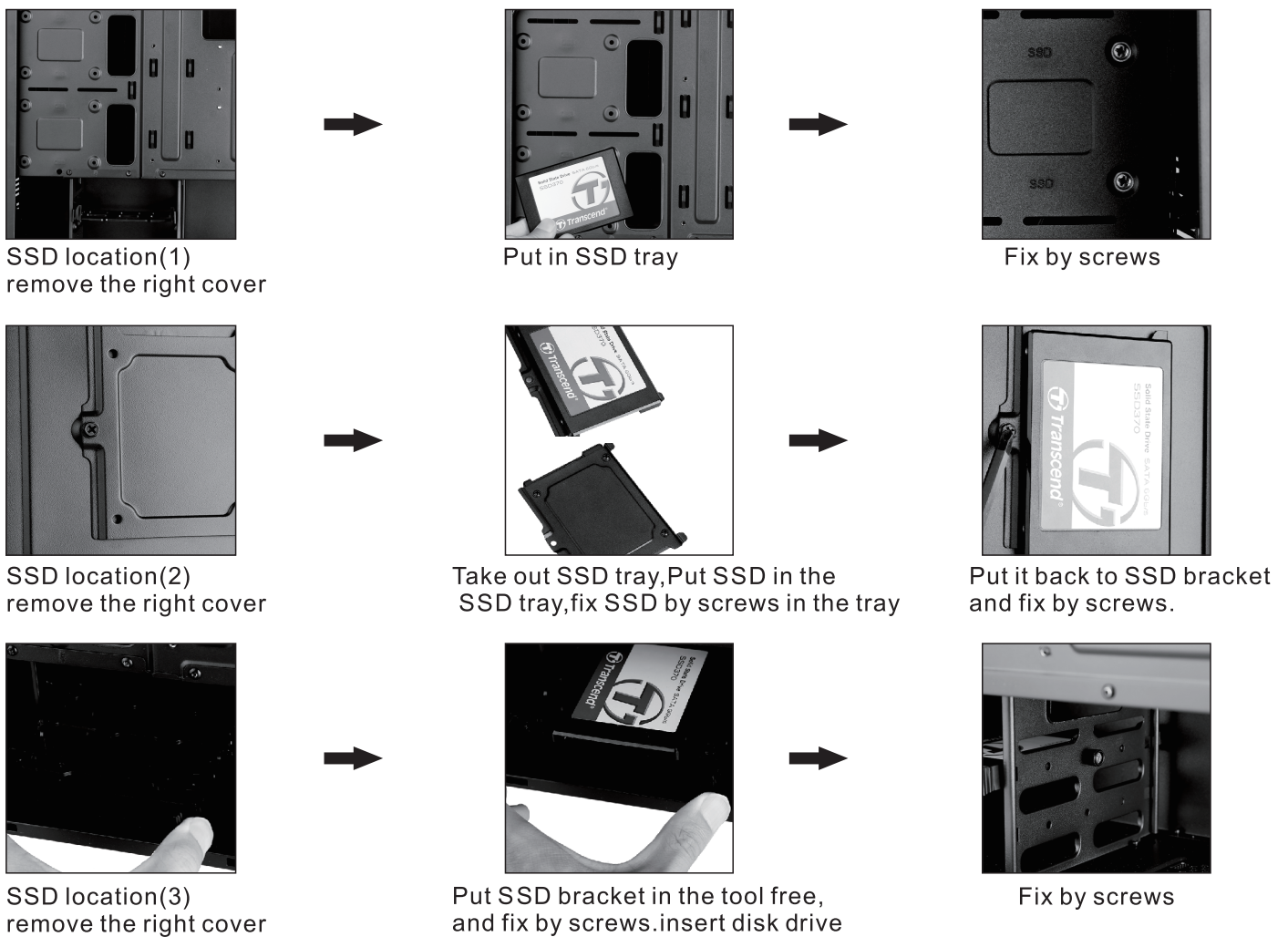
EVOLVE[®] T3

Installation manual

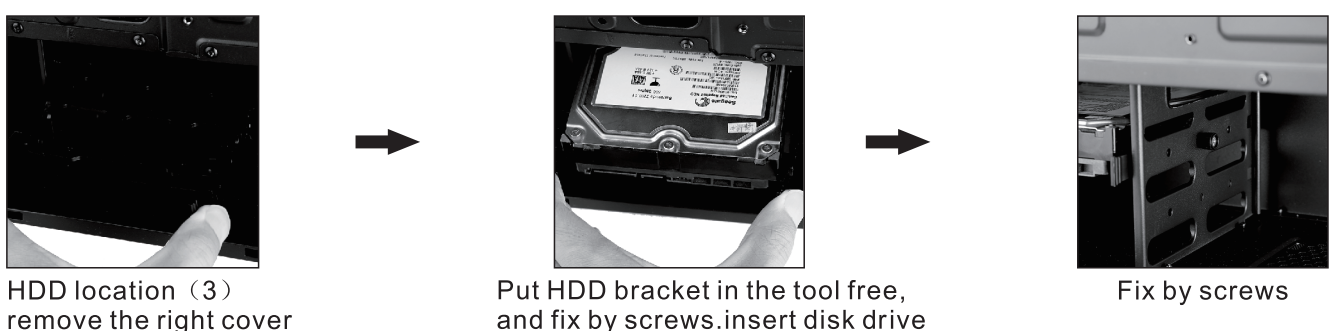
Fan installation



2.5 SSD installation



3.5 HDD installation



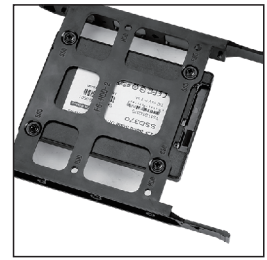
Installation of the multi-function free tool hard disk



multi-function free tool hard



Put SSD in



Turn and screw together

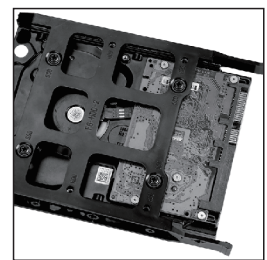
multi-function free tool hard



multi-function free tool hard



Put HDD bracket in the tool free



Turn and screw together

ODD installation



Open up ODD tray



Put ODD in

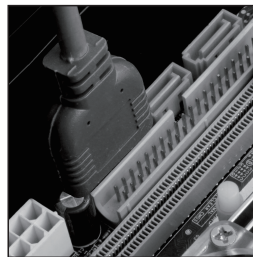


Fix ODD by screws

USB3.0 installation



Connector of USB3.0



Connect USB3.0 to Motherboard



USB3.0 port on front panel



Disposal: The symbol of crossed out container on the product, in the literature or on the wrapping means that in the European Union all the electric and electronic products, batteries and accumulators must be placed into the separate salvage after finishing their lifetime. Do not throw these products into the unsorted municipal waste



DECLARATION OF CONFORMITY

Hereby, the company Abacus Electric, s.r.o. declares that the EVOLVEO T3 is in compliance with the requirements of the standards and regulations, relevant for the given type of device.

Find the complete text of Declaration of Conformity at <ftp://ftp.evolveo.com/ce>

Dovozce / Dovožca / Importer / Importőr
Abacus Electric, s.r.o.
Planá 2, 370 01, Czech Republic

Výrobce / Výrobca / Manufacturer / Gyártó
Naxya Limited
No.5, 17/F, Strand 50, 50 Bonham Strand, Sheung Wan, Hong Kong
Made in China

Copyright © Abacus Electric, s.r.o.
www.evolveo.com
www.facebook.com/EvolveoCZ

All rights reserved.
Design and specification may be changed without prior notice.