

# How to Configure iSCSI Initiator in Microsoft Windows Server 2012 R2

Part Number: QSWP1604A  
Published: May 2016  
Edition: 1.0



## **Copyright**

© Copyright 2016 QSAN Technology, Inc. All rights reserved. No part of this document may be reproduced or transmitted without written permission from QSAN Technology, Inc.

## **Edition 1.0 (May 2016)**

This edition applies to QSAN XCubeSAN Series. Note that this document was produced based on beta code and some screens may change when it becomes generally available.

## **QSAN Technology, Inc.**

4F., No.103, Ruihu St.,  
Neihu Dist., Taipei City 114,  
Taiwan (R.O.C.)

Tel: +886-2-7720-2118  
Fax: +886-2-7720-0295

Email: [sales@qsan.com](mailto:sales@qsan.com)  
Website: [www.qsan.com](http://www.qsan.com)

# Notices

---

This document could include typographical errors or technical inaccuracies. Changes are made to the document periodically. These changes will be incorporated in new editions of the publication. QSAN may make improvements or changes in the products. All features, functionality, and product specifications are subject to change without prior notice or obligation. Document contained herein is subject to change without notice.

The references in this document to non-QSAN websites are provided for convenience only. They do not in any manner serve as an endorsement of those websites. The documents at those websites are not part of the materials for QSAN products. Using those websites is at your own risk.

Any performance data contained herein was determined in a controlled environment. Therefore, the results obtained in other operating environments may vary significantly. Some measurements may have been made on development-level systems and there is no guarantee that these measurements will be the same on generally available systems. Furthermore, some measurements may have been estimated through extrapolation. Actual results may vary. Users of this document should verify the applicable data for their specific environment.

This information contains examples of data and reports used in daily business operations. To illustrate them as completely as possible, the examples include the names of individuals, companies, brands, and products.

All of these names are fictitious and any similarity to the names and addresses used by an actual business enterprise is entirely coincidental.

## Trademarks

QSAN, the QSAN logo, and qsan.com are trademarks or registered trademarks of QSAN Technology, Inc. All products and trade names used in this document are trademarks or registered trademarks of their respective companies.

## Technical Support

Thank you for using QSAN Technology, Inc. products; if you have any questions, please contact QSAN Support. We will reply to you as soon as possible.

- Website: [http://www.qsan.com/en/contact\\_support.php](http://www.qsan.com/en/contact_support.php)
- Email: [support@qsan.com](mailto:support@qsan.com) (09:00 GMT+8 ~ 18:00 GMT+8, 09:00 GMT ~ 18:00 GMT)
- Skype ID: qsan.support (09:00 GMT+8 ~ 18:00 GMT+8, 09:00 GMT ~ 18:00 GMT)

# Contents

---

<b>Notices</b>	<b>i</b>
Trademarks	i
Technical Support	i
<b>Configure iSCSI Initiator</b>	<b>1</b>
Executive Summary	1
Audience	1
Test Environment	1
Configuration Guide	1
Enable Multipath I/O feature	1
Connect to iSCSI Target	2
Setup MPIO (Multipath I/O)	4
Enable MPIO Support	6
Configure Multipath Policy	9
Disconnect	10
Conclusion	11
Apply To	11
Reference	11

# Configure iSCSI Initiator

---

## Executive Summary

In this document, we will guide users to understand how to use the software iSCSI initiator in Microsoft® Windows® Server 2012 R2 to connect to QSAN XCubeSAN dual controller system. We will also demonstrate the steps pertaining to how multipath I/O be configured with XCubeSAN for achieving the expected throughput.

## Audience

This document is applicable for QSAN customers and partners who are familiar with QSAN products. Any settings which are configured with basic operations will not be detailed in this document. If there is any question, please refer to the user manuals of products, or contact QSAN support for further assistance.

## Test Environment

### Host

- OS: Microsoft Windows Server 2012 R2
- Software: Microsoft iSCSI initiator

### Storage

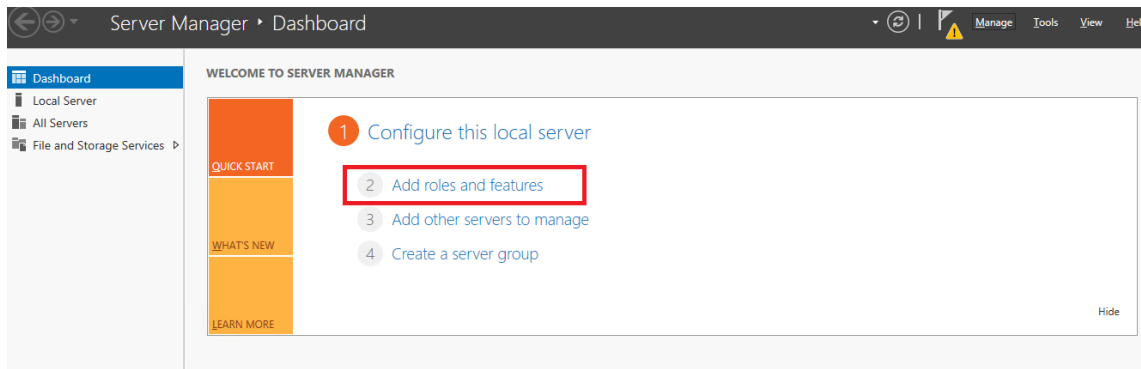
- QSAN XCubeSAN XS5224
  - Firmware Version: 1.0.0

## Configuration Guide

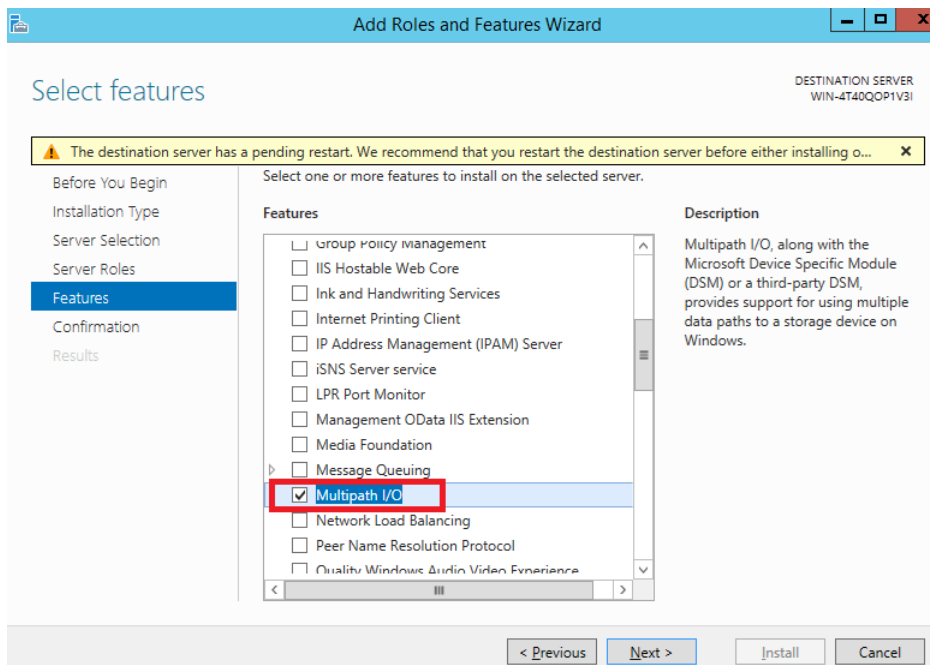
Here is the step by step to setup Microsoft iSCSI Initiator. Please visit Microsoft website for latest iSCSI initiator.

### Enable Multipath I/O feature

1. Open the Server Manager window, and click **Add roles and features**.



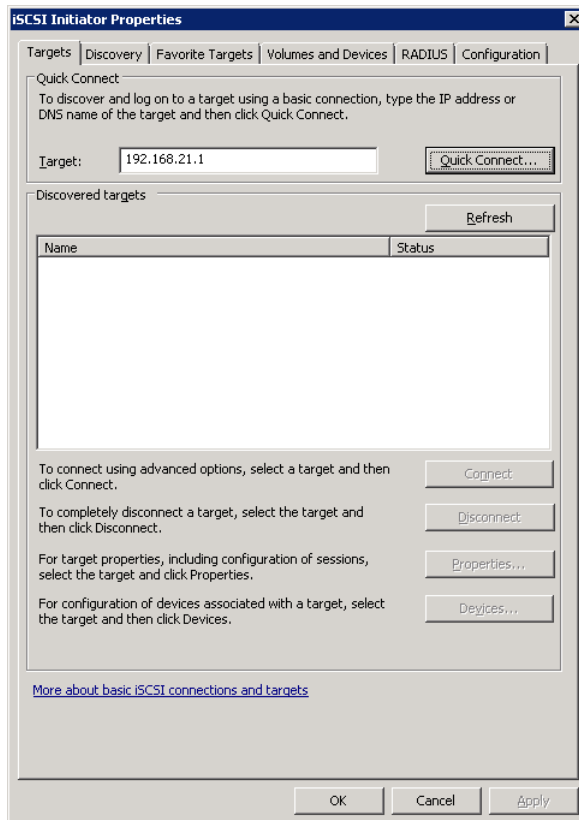
2. Check the item of **Multipath I/O**, and click **Next** button to install this new feature.



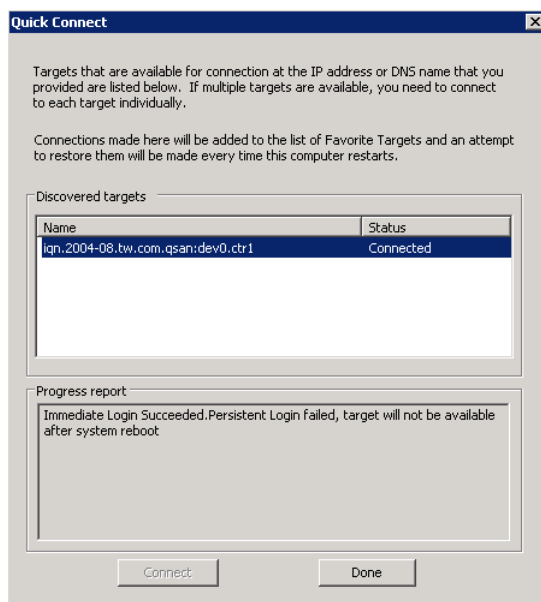
3. This requires a reboot of server to take effect.

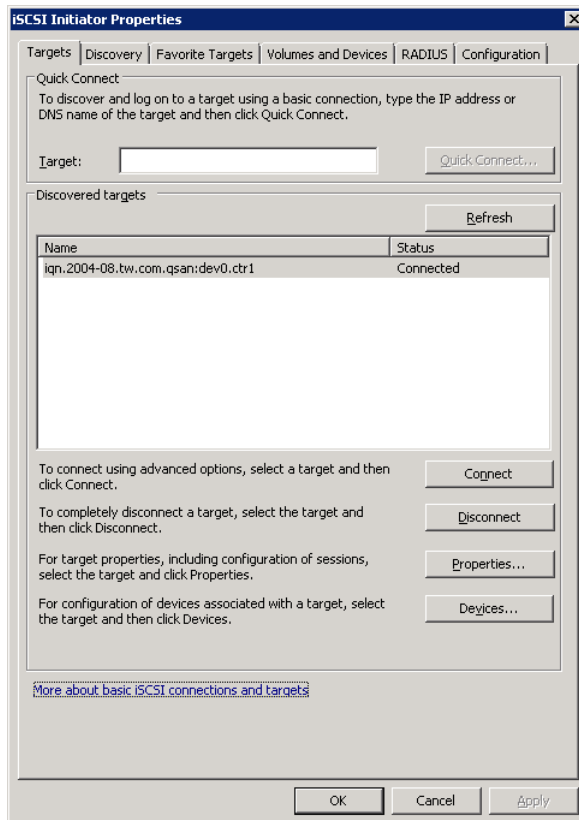
## Connect to iSCSI Target

1. Run Microsoft iSCSI Initiator.
2. Input IP address of the iSCSI LAN port on XS5224, and click **Quick Connect** button.



3. Select the target name, and then click **Done** button.



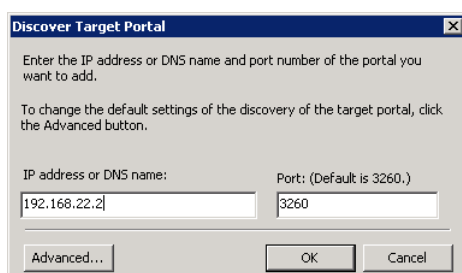
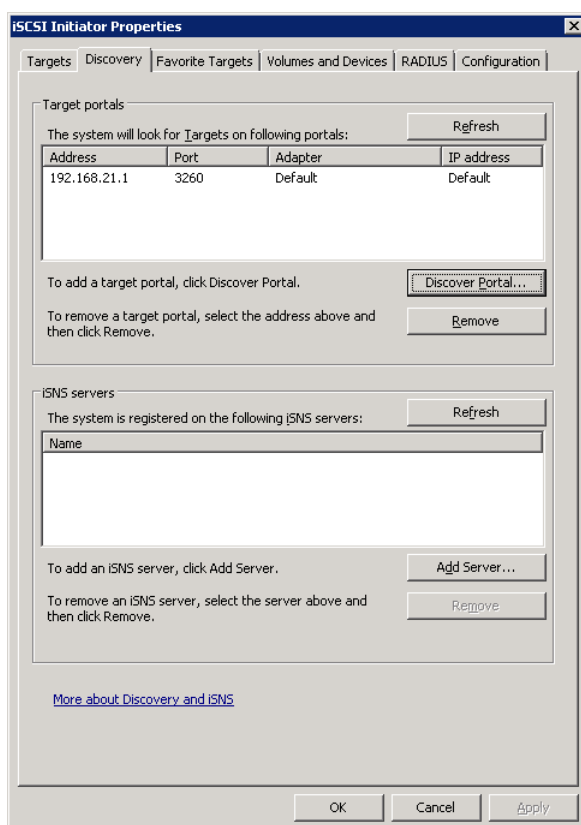


4. It connects to an iSCSI disk now.

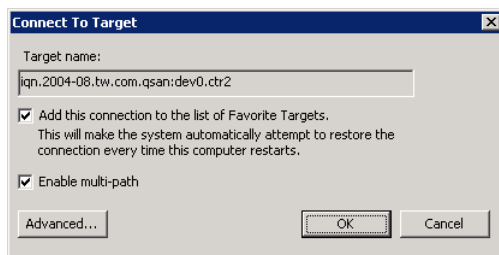
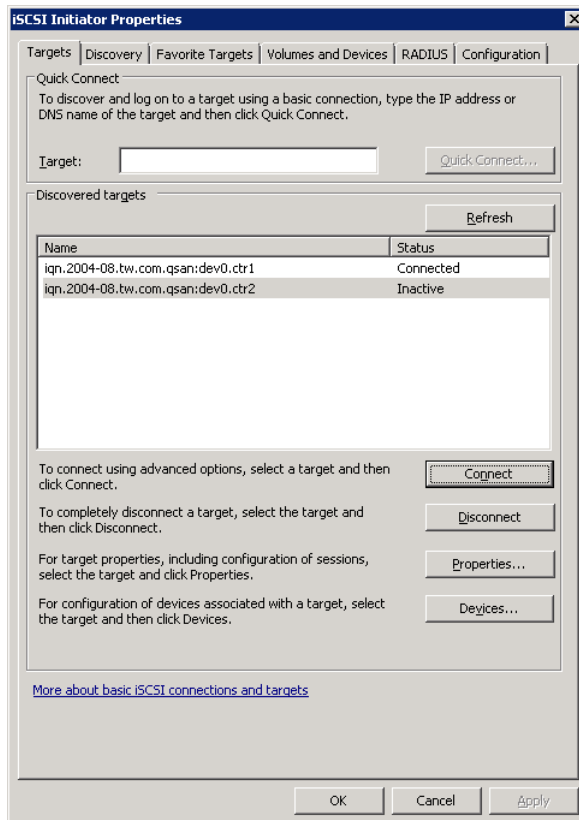
## Setup MPIO (Multipath I/O)

1. If running MPIO, please continue.
2. Click **Discovery** tab to connect the second path.
3. Click **Discover Portal** button. Enter the IP address or DNS name of the target.





4. Click **OK** button.



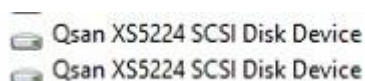
5. Click **Targets** tab, select the second path, and then click **Connect** button.
6. Enable **Enable multi-path** checkbox. Then click **OK** button.
7. Done, it connects to an iSCSI disk with multi-path.

## Enable MPIO Support

1. For the iSCSI storage, use the **iSCSI Initiator** to connect to the XS5224 with volume attached to LUN on it first.



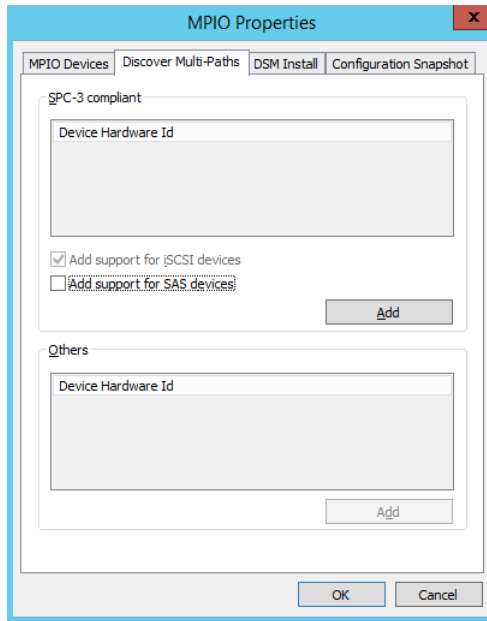
2. In **Device Manager**, under Disk drives, it will display one or more disks, depends on how many paths available to a single volume on the storage. There are two identical SCSI devices to one volume on XS5224 as two paths are available from the host to the storage.



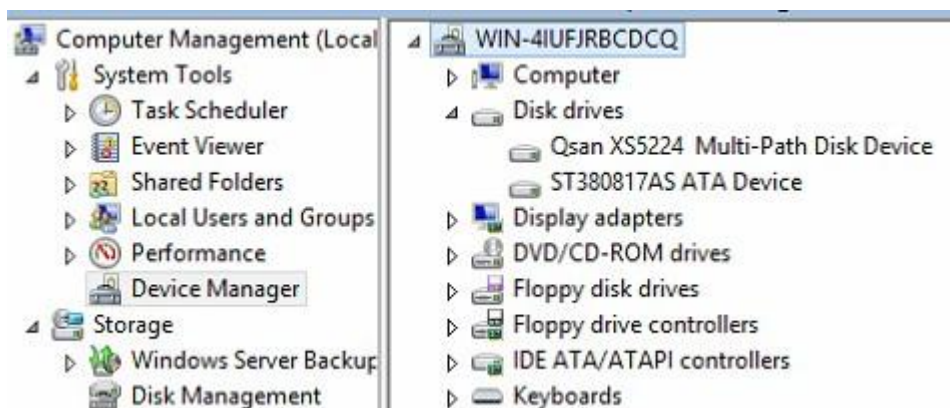
3. After adding the Multipath I/O feature, MPIO support for iSCSI devices can be added or removed via **MPIO** tool.



4. In **MPIO Properties** window, switch to the label of **Discover Multi-Paths**, check the option of **Add support for iSCSI devices** and click **Add** button. A reboot for the host is required for this setting to take effect.



5. After reboot, logon the iSCSI target again. The iSCSI disk drive in **Device Manager** becomes a multi-path disk device now.



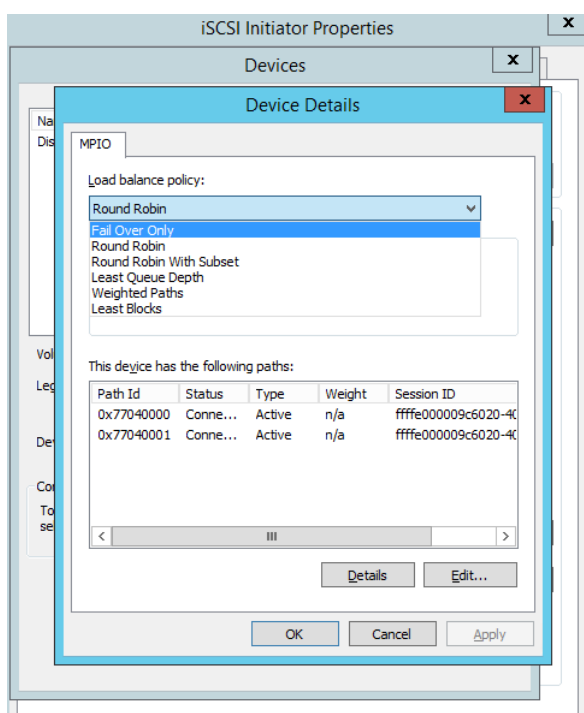
6. For FC (Fibre Channel) volume, the steps to enable the MPIO support are similar as the iSCSI storage. Here is an example, connecting the host with HBA to the storage, and there is a volume attached with a LUN.
7. In **MPIO Properties** window, switch to the label of **Discover Multi-Paths**. The FC device will be listed in the SPC-3 compliant column. Select the **Qsan** and click **Add** button. It will take about half minutes to accomplish the setting, and then a reboot on the server is necessary to let it take effect.



8. After reboot, the volume on XS5224 in **Device Manager** becomes a multi-path disk device.

## Configure Multipath Policy

1. For the iSCSI disk, the multipath policy can be specified inside the Microsoft **iSCSI initiator**.

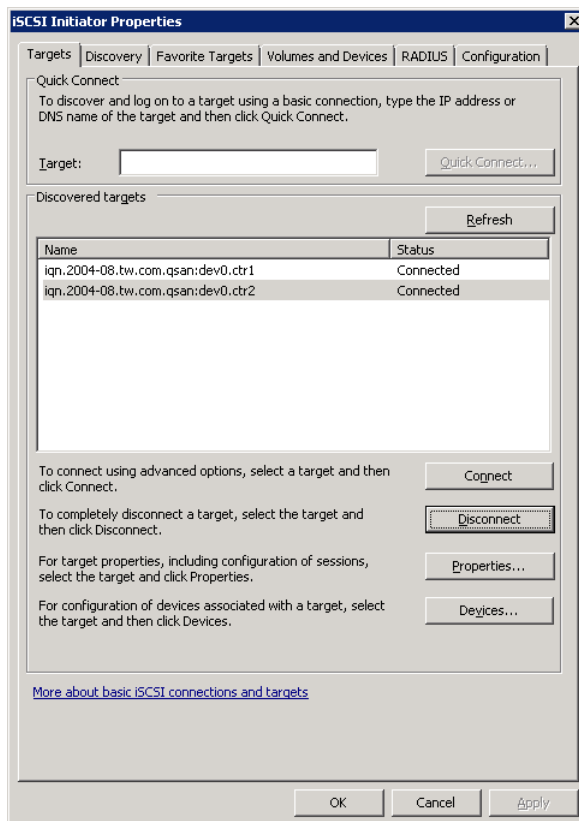


2. For the FC disk, the multipath policy can be specified by right clicking on the multi-path disk device in the **Device manager**, and then select **Properties**.
3. In MPIO label, the policy can be modified.



## Disconnect

1. Select the target name, click **Disconnect** button, and then click **Yes** button.



2. Done, the iSCSI device disconnect successfully.

## Conclusion

QSAN XCubeSAN series products provide Active-Active dual controller and support ALUA, user don't have to pre-configure any option on XCubeSAN system to achieve the redundancy between Windows server and XCubeSAN, just make sure the multipath I/O session is well-configured and the failover/back mechanism will automatically be executed once one of controllers gets failed.

## Apply To

- XCubeSAN Series
- AegisSAN Q500 Series
- AegisSAN LX Series
- AegisSAN V100 Series

## Reference

### Obsolete QSAN White Paper

- QWP201201-How\_To\_Enable\_MPIO\_in\_WS2008.pdf